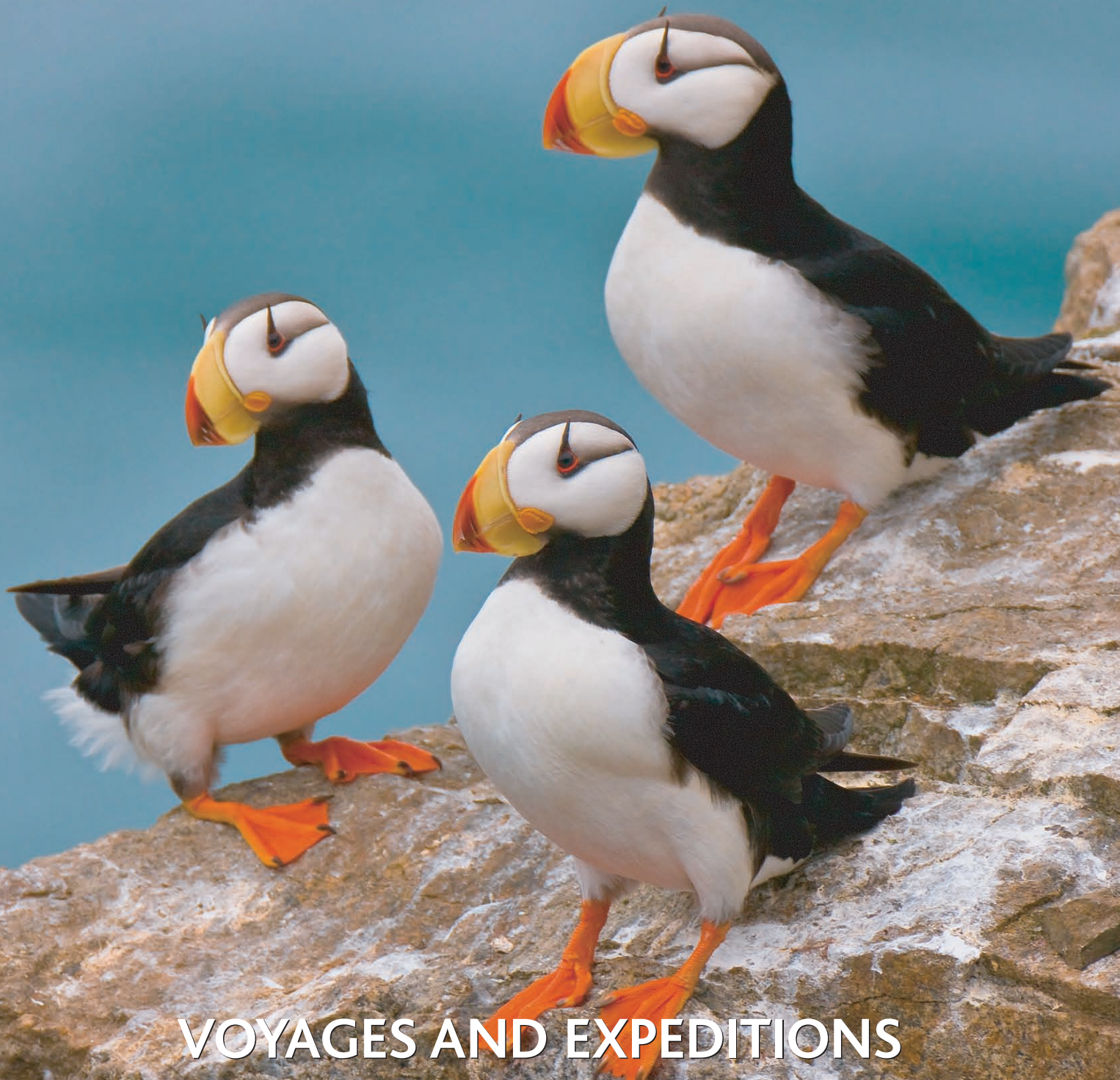
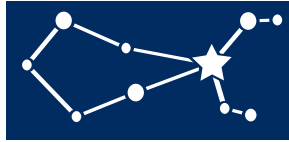


ARCTURUS

THE POLAR ARM OF FAR FRONTIERS TRAVEL



VOYAGES AND EXPEDITIONS
2012-2013



ARCTURUS

THE POLAR ARM OF FAR FRONTIERS TRAVEL

Our new website

Look out for our fresh new design for the Arcturus website at www.arcturusexpeditions.co.uk.

It is much more user-friendly than the previous site, featuring special offers, many more maps, comments from clients, trip reports and Fiona's own travel tips. There are also more detailed descriptions of the itineraries we include here. We really hope you like it and look forward to receiving your feedback!

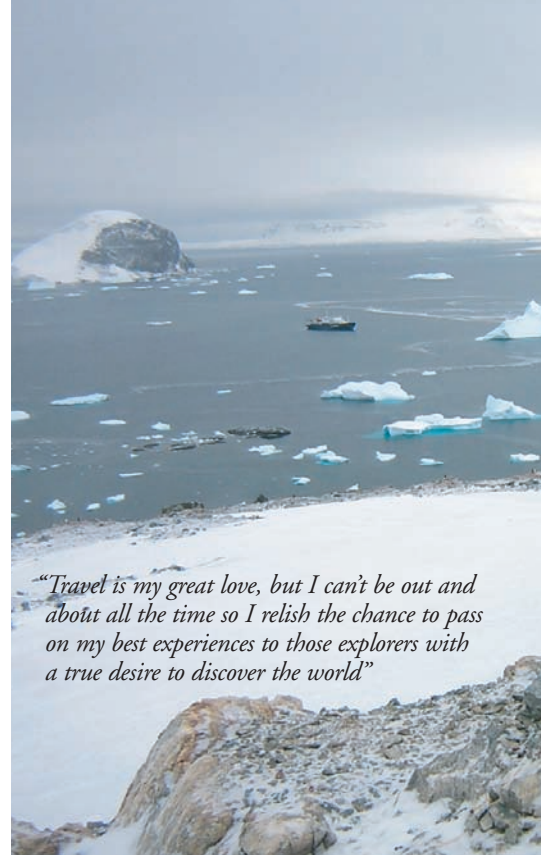


Welcome to Arcturus, the polar arm of Far Frontiers Travel, and our 2012-2013 catalogue. This year I am delighted to be introducing new options for Iceland as well as the Canadian Arctic and to announce our new-look website at www.arcturusexpeditions.co.uk where you will find lots more information.

We continue to update our trips in Greenland, Kamchatka and Norway so that there is always a new twist to offer and to extend our range of smaller independently-owned ships offering voyages to the Arctic and Antarctic. Our expertise in tailor-making itineraries means that we can also advise our clients on extending their voyages to create an exciting grand finale to their trip.

All our voyages and expeditions are accompanied by excellent trip dossiers, so here we just give you a taster of what we will be running over the next twelve months.

Upon enquiry, we will send you a detailed itinerary which should help to answer any questions you may have – but as our regular clients know, we are always ready to discuss any aspect of your plans so do call us for a chat.



“Travel is my great love, but I can't be out and about all the time so I relish the chance to pass on my best experiences to those explorers with a true desire to discover the world”

We are also delighted that Dr. Lorraine Craig continues on board to advise on polar matters, talk about her portfolio of private trips and discuss clients' requirements prior to booking.

Fiona Brijnath, Director

About us

Arcturus, based in Devon, is a small niche travel company specialising in polar tours. The company has been operating for over 30 years and, as one of the foremost operators to the polar regions, we offer an unparalleled selection of extraordinary expeditions and voyages to the Arctic, Antarctic, Norway, Greenland, Iceland and some of the remotest parts of Russia. Now owned by and operating as the polar division of Far Frontiers Travel Limited, the company was, in its early days, one of the pioneers of wildlife tours in the Arctic. Our itineraries have their genesis in years of local research and experience and many of the contributions to the programmes we offer today were made by early travellers to these regions for scientific research, expeditions or simply for pure pleasure!

At Arcturus, we arrange our own expeditions, mostly camping, walking, dog-sledging and skiing, with an emphasis on enjoying wildlife and scenery in remote places. We also act as agents for selected operators for adventure voyages in the Antarctic and the Arctic.

The company is run by Fiona Brijnath who, with her life-long career in the travel business, has developed tailored travel itineraries for nearly 20 years, many of them for clients who return time and again. She will be your first point of contact, ably assisted by Dr. Lorraine Craig PhD who was previously Head of Research and Higher Education at the Royal Geographical Society and Director of the Cambridge Arctic Shelf Programme. In addition to being past president of the Arctic Club, Lorraine has led walking and skiing expeditions for Arcturus in North East Greenland. She is currently based at the Royal School of Mines, Imperial College London and, when she is not lecturing, continues to advise on all polar matters, lead tours and develop new destinations.



Contents

EXPEDITIONS

Arctic Norway	4
Iceland and Greenland	5
Russian Far East: Kamchatka	6
Arctic Russia: Solovetski Islands and the White Sea	7

Voyages – The Arctic

Scottish Islands, Arctic Norway and Greenland	8
Sail Spitsbergen, Lofotens and Greenland	9
Iceland, Greenland, High Arctic and Canadian Arctic	10
Russian Arctic	11
Russian Arctic	12

Voyages – The Antarctic

Falkland Islands, South Georgia and Antarctic Peninsula	13
Weddell Sea, Antarctic Peninsula, Ross Sea	14
The Ships	15
	16



Fiona's travel to remote destinations has equipped her with unrivalled expertise in many countries around the globe and Far Frontiers Travel owes its success to her particular forte in arranging bespoke holidays and multi-country itineraries. **You are unlikely to find anyone who gives more attention to personal service and detail or who is better equipped to advise on how to make yours the trip of a lifetime.**

Prices

All the guide prices quoted here include international flights from London in economy class, internal transport, transfers to the embarkation point where it is possible to pre-book and accommodation based in twin rooms with meals as specified. Guide prices for voyages are based on twin cabins with shared or private facilities and we can provide prices for single occupancy, triple, quadruple and superior cabins and suites (where available) on request. Trips are fully-guided either from the UK or locally. We also include fuel surcharges known at the time of going to print. Please note however, that in a climate of fluctuating fuel prices, we are bound to pass on any additional surcharges as we are informed of them.

Pre and post-tour arrangements

Because we specialise in tailor-making holidays all over the world we are more than happy to make additional pre and post-tour arrangements on your behalf. For example, we can suggest some fantastic extended trips to Chile, Argentina or Ecuador and The Galapagos for those on Antarctic voyages, or if you are visiting Arctic Russia, you could begin or end the trip marvelling at the fabulous sights in Moscow and St. Petersburg. **Please call us to discuss your individual requirements.**

ARCTURUS – THE POLAR ARM OF FAR FRONTIERS TRAVEL,
Ninestone, South Zeal, Devon EX20 2PZ **t/f:** (+44) 01837 840640
e: fiona@arcturusexpeditions.co.uk **w:** www.arcturusexpeditions.co.uk



Far Frontiers Travel specialises in tailor-making bespoke travel to Central Asia, China and Mongolia, the Far East, Indian Subcontinent and the Himalayas, Indochina, Middle East, North Africa and Europe, Russia and South America. We pride ourselves on providing a friendly and professional service at all times.

Far Frontiers Travel Ltd Ninestone, South Zeal, Devon EX20 2PZ
t: (+44) 01837 840640 **e:** fiona@farfrontiers.com **w:** www.farfrontiers.com

Registered in England No 5798604 Registered office: Oakley House, Tetbury Road, Cirencester, Gloucestershire, GL7 1US

Your financial protection

The air holiday packages in this brochure are **ATOL protected** by the Civil Aviation Authority. Our ATOL number is ATOL 9270. Please see our booking conditions for more information.

Total Payment Protection (topp) Policy cover: In compliance with the UK Package Travel, Package Holidays and Package Tours Regulations 1992 an insurance policy has been arranged with Travel & General Insurance Company plc, authorised and regulated by the Financial Services Authority, to protect customers' prepayments in the unlikely event of our financial failure and paid in respect of:

- non-flight inclusive packages commencing and returning to the UK
- the ground handling aspects of packages where the customer is responsible for arranging travel to the destination offered in this brochure (subject to the terms of the insurance policy), for:
- a refund of such prepayments if customers have not yet travelled, or
- making arrangements to enable the holiday to continue if customers have already travelled.

Customers' prepayments are protected by a topp policy. In the unlikely event of financial failure please contact the claims helpline on 0870 0137 965. A copy of the policy is available on request.



COVER PHOTO: J E Ross, Heritage Expeditions.
PHOTOS THIS PAGE: Arcturus; Rinie van Meurs, Oceanwide Expeditions;
Antarctica XXI and Adventure Canada.
WATERCOLOUR MAPS: Claire Baker.

Arcturus has over 30 years' experience in leading expeditions for small groups of people and can cater for varying levels of fitness. By day we take long or short hikes on foot, snow shoe or ski or explore by boat, and at night we camp in comfort. You will make friends and share priceless experiences to treasure for a lifetime.

» itineraries «

Explore Dividalen – drive your own dogs | 6 days

Everyone agrees on how exhilarating it is to explore by dog sledge, standing on the runners whilst the dogs take the strain. Snow and weather conditions permitting, you will make daily trips through beautiful snowscape. After a day on the trail enjoy a sauna or hot tub before relaxing around a log fire. Your hosts have a fund of stories about life in the north. They are excellent cooks and their menus feature locally caught reindeer, elk and salmon.

- » dates « 20 – 25 January 2012
17 – 22 February 2012
2 – 7 March 2012
- » price « **£1,695** per person
- » leader « Local Norwegian leader
- » key info « Group size 4-6. Accommodation in cosy cabin. No previous experience required

Mountain dog sledging hut to hut | 8 days

Combine extensive exploration of **Dividalen's** dramatic scenery of mountains, lakes and high plateaux with the luxury of spending each night in a different mountain hut. Our route will depend on the weather and snow conditions but in the evenings we shall relax in comfort over meals made with local produce, discussing the day's journey.

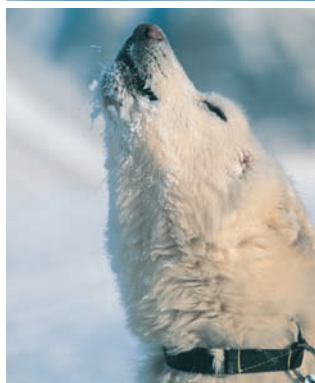
- » dates « 23 February – 1 March 2012
- » price « **£2,395** per person
- » leader « Local Norwegian leader
- » key info « Group size 4-8. Accommodation in mountain huts. Some previous experience required

Winter dog sledge to basecamp ship in the ice | 6 days

Travelling in the footprints of Fritjof Nansen you'll head out from **Longyearbyen** in **Spitsbergen** to the beautiful **Tempelfjorden** mushing your own dog team of Alaskan huskies to your base for two nights – a comfortable ship frozen into the pack ice. The boat has 10 comfortable two-bed cabins, and there are good on-board facilities. Enjoy delicious meals and return home with the knowledge of the special relationship between a man and his dog in the Arctic.

- » dates « Weekly from 1 March – mid May 2012
- » price « **£2,985** per person
- » leader « Local leader
- » key info « Drive your own dogs. All equipment provided and all necessary training given

EXPEDITIONS



ARCTIC NORWAY Dog-sledging – drive your own dogs

Early spring when the days are rapidly lengthening is a beautiful time of year in the Arctic and travelling by dog-sledge is to experience its true spirit. These expeditions in the mountains and high plateaux of **Northern Norway** have been organised and led by our Norwegian friends for over 15 years. We can arrange short trips and extensions such as a visit by skidoo to the **Sami** (Lapp) people in their summer or winter camps, to **Summer Island** or the picturesque **Lofoten Islands** or a day visit to **Tromsø** and its **Polar Museum** and **Northern Lights Planetarium**. For all trips you will drive your own dog team. New for 2012 are two new itineraries for **Spitsbergen**.

Summer Spitsbergen encounter | 8 days

High mountain peaks pointing to the sky, azure blue glacier fronts, unspoiled scenery and magnificent wildlife are all features of our week long summer expedition. You'll stay in a delightful trappers lodge, at a former radio station and spend two nights in tents to explore the wild and beautiful **Isfjorden**. This trip is for anyone who likes to walk in the mountains and includes landings to go hiking in the varied terrain, observe Arctic birds, study the glacier fronts and take a closer look at flora, fauna and cultural heritage.

- » dates « 15 – 22 July and 5 – 12 August 2012
- » price « **£3,395** per person
- » leader « Local leader
- » key info « Includes two nights camping. Suitable for anyone who likes to walk in the mountains. All equipment provided

“The equipment provided locally was great – we were warm, dry and comfortable in our suits and boots. The dogs are incredible, always keen to go and tireless. It was obvious the guys knew them very well and respected each individual dog for its attributes. Of course I cried like a baby when we waved goodbye to them all from the Ice Hotel... And finally, how could I forget! On the last night of our dog sledging we had a fantastic viewing of the northern lights. Fiona thank you very much for arranging the trip which all went so smoothly”.

Jude Perry and John Verschaeren
The King's Way: Crossing Norway into Sweden

- BEST TIME TO GO:** January to early April for good snow conditions for sledging.
- TOP TIP:** We provide superbly warm sledging suits and thick felt-lined boots so you will never be cold.
- DON'T MISS:** The polar museum in Tromsø – it has wonderful atmosphere.
- WHAT TO EXPECT:** Stunning displays of the aurora borealis in the night-time sky in the depths of winter (if you're lucky)!



PHOTOS: Basecamp Explorer and Aurora Expeditions.



"Icebergs floating in the world's largest fjord enhanced the beauty of the short Arctic summer. Our time on the boat was equally as fantastic as walking on colourful tundra. The Inuit guides were fascinating to travel with."

Dr. Lorraine Craig



Dog sledging around Liverpool Land with Inuit hunters | 10 days

Leaving the small hunting village of **Ittoqqortoormiit (Scoresby Sund)** we head due north to explore **Liverpool Land** where sheer cliffs drop down to meet the sea ice and deep valleys beg to be explored. To the west lies **Jameson Land** and, to the east, Liverpool Land where it's mostly glaciated land breeding icebergs. We should see countless signs of snow hares, lemmings and polar foxes and we may be lucky enough to see polar bear.

Our guides are local mushers with a wealth of knowledge about the area and how not just to survive the cold but to fully enjoy it. Two nights are spent in a local guest house in Ittoqqortoormiit and the rest in tents or local huts.

- » dates « Tailor-made to suit
- » price « **£2,970** per person
- » leader « Local Greenlander
- » key info « Weather and snow conditions will determine final itinerary. All equipment provided. Price based on two travelling. Two guests per sledge, overnighting in tents or cabins

Drive around Iceland | 8 days

This tailor made self-drive package will take you all the way around Iceland. Along the route you will be able to stop at places such as **Thingvellir National Park**, the **Geysir** geothermal area, **Gullfoss waterfalls**, **Skaftafell National Park**, the **Glacier Lagoon**, **Lake Myvatn** and many more extraordinary natural attractions.

- » dates « Tailor-made to suit
- » price « From **£1,955** per person
- » key info « You drive yourselves – easy to do and we give plenty of advice. There are lovely boutique hotels in Reykjavik we can suggest as an upgrade

Kingdom of volcanoes and glaciers | 8 days

Start your trip with a day free to wander in **Reykjavik** and sample some of its great restaurants and intriguing sights before setting out for five days of easy to moderate guided hikes through stunning volcanic scenery. You will marvel at the breathtaking panoramic views over glaciers and spectacular mountain peaks. Transport is by comfortable four-wheel drive vehicles.

- » dates « Various departures May to September
- » price « From **£2,530** per person
- » key info « The five days of walking is on a group basis and fully guided and we can extend the trip if required. Transport by 4WD



TAKE WITH YOU: You can swim year round in countless geothermal pools and lagoons with a typical temperature of 25-28°C, so a bathing suit is a must, whatever time of year you visit!

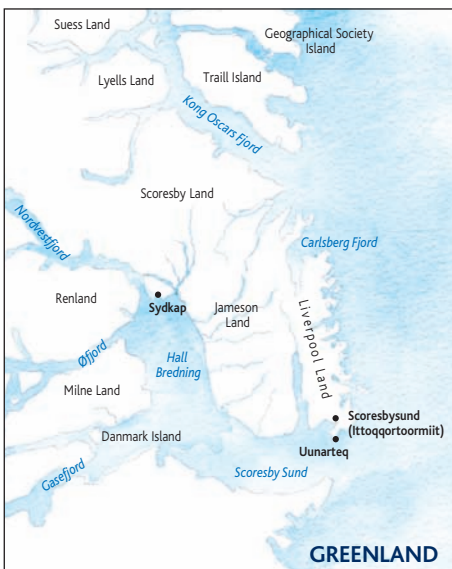
READ: *Sirius Patrol* by Peter Schmidt Michelson.

ICELAND AND GREENLAND

Tailor made and guided tours

Greenland remains a popular destination for our expeditions and this year we are introducing **Iceland** with both tailor made or guided options. If you are joining a ship in Iceland, it is well worth considering adding a few days to your trip pre or post voyage.

Iceland is a land of midnight sun in summer, while in winter you may be lucky enough to witness the aurora borealis in all its glory. It beckons the visitor with a network of mountainous, rugged and hauntingly scenic routes for driving around the country, and many of its natural history sites are well marked and close to the road. For this reason we highly recommend self-drive itineraries either by car or four wheel drive but, for the more cautious, we can also suggest various chauffeur-driven itineraries.



» itineraries «

Cross country skiing in Greenland with Lorraine Craig

Lorraine Craig will return to cross country skiing in Greenland in 2013. Please call us if you are interested in joining her.

For summer 2012, Lorraine is considering an 'easy' trekking trip to **Mongolia** for a group of around 10 clients. Walking would involve carrying a day-pack only, and sleeping in tents or gers. She will combine trekking and some sightseeing with learning more about the culture of the country. Do call us if you would like to join this special trip.

PHOTOS: Arcturus and Polar Star Expeditions.

For centuries the Koryaks, Eveni and Itelmen people have used dog sledges in the wilderness and it is with them that you will travel. The area is rich in wildlife and you will see many tracks in the snow which your dog-sledge drivers will be able to identify. Your hosts receive very few visitors so you will feel privileged to be a guest of their communities and appreciate their very different way of life.

You can sit on the sledge and be driven by one of the dog handlers, though the aim is to drive the dog team yourself.

» itineraries «

Dog sledging with the reindeer herders and native people | 15 days

Our route takes us over the pristine snow-covered mountain passes, high plateaux and valleys close to the volcano Ichinskiy in central Kamchatka. This area is the traditional home of some of the native peoples and we shall stay at an Eveni reindeer herder's winter camp and the wilderness home of a family of Koryak fishermen.

Nights are spent in huts or yurts (large, heated tents). In the village of **Esso** we will visit the museum, bathe in a hot pool, meet the local people and learn about their culture. If our visit coincides with the 'Beringia' dog sledge race we may be able to watch some of it and meet the competitors.

» dates « 19 February – 4 March 2012 and
1 – 15 March 2012

» price « **£4,880** per person

» leader « Local English speaking Russian leader

» key info « Group size: minimum 4, maximum 8

Dog sledging to Nalycheva Valley | 11 days

This exciting dog sledging expedition will take us to the centre of the **Nalychevo National Park** which lies to the north of **Petropavlovsk**. The park is in a magnificent setting surrounded by nine volcanoes, some of them still active. The valley has many fascinating geothermal areas to explore and spectacular scenery. Our nights will be spent in comfortable huts and we shall have plenty of opportunities to enjoy bathing in the hot springs.

» dates « 13 – 23 March 2012

» price « **£4,150** per person

» leader « Local English speaking Russian leader

» key info « Group size: minimum 3, maximum 8



TOP FACT: If you've sledged in Russia in winter you're in an elite club!

TEMPERATURE: We should warn that winter dog sledging expeditions are for the hardy as it can be extremely cold!

TAKE WITH YOU: Dried fruit, nuts and chocolate to vary your diet.

BEST TIME TO GO: June to September for summer adventures, January to March for winter activities.

PHOTOS: Arcturus.



RUSSIAN FAR EAST: KAMCHATKA

Spectacular land of bears, volcanoes and wilderness

The **Kamchatka Peninsula** is the home of the Itelmen, Eveni and Koryaks, some of whom live by their traditional ways of hunting, fishing, reindeer-herding and gathering wild plants. It is also home to the largest brown bear in Russia. The rivers teem with at least five species of spawning salmon and its rugged coastline accommodates thousands of seabirds as well as seals, sea lions and sea otters. In the valleys plants grow at an incredible rate during the summer due to the volcanically-warmed and minerally-enriched soil.

Kamchatka in early summer 2012

Sea mammals, birds, bears, whales, wildflowers and volcanoes | 13 days

We sail from **Petropavlovsk** on a small ocean-going cutter and explore the remote south east coast. There are small islands and sea stacks which are home to thousands of breeding seabirds including puffins and auks, and, on the high cliffs, the magnificent Steller's sea eagle.

We should see brown bears turning over the seaweed washed up by winter storms looking for dead fish, grey whales and orcas. The ship-based part of the expedition is combined with a land visit to scenic **Vachkazhets**, and the active **Mutnovsky** volcano. After climbing through a canyon past a glacier belching steam we enter the crater with its geysers, fumaroles, mud pools, spectacular rock formations and colours.

» dates « 22 June – 4 July 2012

» price « **£3,690** per person

» leader « Local English speaking Russian leader

» key info « Maximum group size: 8. The pace will be leisurely. The walks are not difficult and are entirely at the discretion of the individual

Kamchatka in late summer 2011

Bears, volcanoes, native people, reindeer herders, autumn colours | 18 days

In order to experience the richness of the region's flora, fauna and geology, its scenery and autumn colours, we plan to visit as many habitats as possible including the central valley with the **Kamchatka River**, **Tolbachik**, **Kzudach**, **Mutnovsky** and **Vachkazhets** volcanoes, **Kurilskoe Lake** and the hot **Khodukta River** in the southern tundra. Kurilskoe Lake, part of a nature reserve, is one of the best places in the peninsula to see brown bears and Steller's sea eagles. Moving around by helicopter and truck we will watch bears feeding on berries and salmon spawning, swim in hot rivers, meet the locals in the settlement of **Esso** and stay overnight with the nomadic reindeer herders in their summer mountain camp.

» dates « 25 August – 11 September 2012

» price « **£4,775** per person

» leader « Local English speaking Russian leader

» key info « Based on a group size of 10-14. The pace will be leisurely. The walks are not difficult and are entirely at the discretion of the individual



“On the White Sea, where the nights are white for half a year at a time, Bolshoi Solovetsky Island lifts its white church from the water within the ring of its bouldered kremlin walls, rusty-red from the lichens which have struck root there – and the grayish-white Solovetsky seagulls hover continually over the kremlin and screech”.

Aleksandr Solzhenitsyn –
The Gulag Archipelago

“Our local guide, Irina, was great – nothing seemed to be any trouble for her and she always seemed to have ideas about what we could do every day. We really enjoyed her company and felt that our days had good pace and rhythm about them. Irina was knowledgeable about the area and had obviously spent time developing good relationships with local people who took us about on boats and in trucks – we definitely benefited from this. We are keen birdwatchers and saw plenty including sea and golden eagles, osprey and divers.

Mr and Mrs James Nangle,
Solovetski and the White Sea

Solovetski Islands in winter | 14 days

A wonderful opportunity to visit the crisp, snowy landscapes of the north. After a day in **Moscow**, travel by train to **Archangel** on the banks of the icebound **Dvina River**, through a snow-covered rolling landscape of farms and silver birch wood, dotted with villages, hamlets and wooden churches. From there, fly to the **Solovetski Islands** for a seven-night stay in a homely and comfortable guesthouse. Days will be spent exploring the main island using local transport and snow-shoes. There are many tracks through the woods of 'dancing' birches leading to small lakes and the ice-bound coast. Depending on the ice conditions, we may be able to walk out to some of the offshore islands and visit the monks in their isolated cells. Visit the Solovetski Monastery, Serniki Hill and the Botanic Gardens then enjoy fishing through the ice and, in the evenings, sitting around a wood fire and experiencing a Russian banya.

- » dates « 5 – 18 February 2012
- » price « £2,695 per person
- » leader « Local English speaking Russian leader
- » key info « Group size: 8-10. Weather is normally dry and clear with occasional snow. Temperatures range from minus 20 to plus 5 degrees C. The pace will be leisurely. Snow shoes are required

ARCTIC RUSSIA: SOLOVETSKI ISLANDS AND THE WHITE SEA *An unforgettable adventure*

Much of **Arctic Russia** is tundra dotted with countless lakes and pools through which the vast north-flowing rivers wend their way to the Arctic Ocean. During the short, intense summer these areas are the nesting sites for numerous birds, including the red-breasted goose, Siberian crane and Ross's gull. Wild flowers brighten the ground and musk oxen, bears, reindeer, lynx, wolverine, wolves and foxes roam.

We have organised many expeditions to the Russian Arctic. After our winter visit we will return to the White Sea in June at the time of the 'white nights' when daylight is continuous, using a small boat to navigate among the islands of the Solovetski archipelago.

» itineraries «

Solovetski Islands and the White Sea | 13 days

Situated in the **White Sea**, 150km south of the Arctic Circle, the **Solovetski Islands** were first settled by monks in the 1430s. The archipelago has six large and nearly 100 smaller islands which abound with lakes, wildflowers and nesting birds and, in summer, beluga whales gather to calve in the shallow waters.

On the largest island, surrounded by enormous stone walls, stands the legendary 16th Century **Solovetski Monastery**, which in the 20th Century was one of the most feared and infamous prison camps or 'gulags'. Now that the monks have returned, you can visit the beautiful cathedral,

church, refectory and other buildings enclosed by the great 'kremlin' or fortification.

In some places, using small boats and wooden rakes, men still collect seaweed to be made into local products. Accommodation here is simple – family-owned comfortable small hotels with delicious food. It's an excellent place for walking in summer.

- » dates « 10 – 22 June 2012
- » price « £2,365 per person
- » leader « Local English speaking Russian leader
- » key info « Group size: 8-10. Weather may be variable with temperatures ranging from 5-20 degrees C. The pace will be leisurely, easy walking and entirely at discretion of the individual

DID YOU KNOW: The Solovetski Islands boast over 170 architectural and archaeological monuments, including 33 mysterious stone labyrinths dating back around 3,000 years.

READ: *Gulag Archipelago* by Alexander Solzhenitsyn.

DON'T MISS: The exquisite art and architecture of Moscow and St. Petersburg would make a memorable beginning or end to your Russian Arctic exploration.

ACCOMMODATION: Simple family-owned comfortable small hotels with delicious food.

PHOTOS: Arcturus; Travel Russia.



The unimaginable majesty of the Arctic, a vast ice-encrusted ocean ringed by islands, casts a spell on all who visit. Many of our clients are drawn back time after time to visit different areas of the High Arctic. We offer a variety of voyages, some geared towards active exploration with walking, kayaking or skiing, others for those who want a more leisurely pace in comfortable vessels. Whichever you choose, the memories of this dramatic wilderness will stay with you always.



VOYAGES – THE ARCTIC



» new for 2012 «

- » Rembrandt Van Rijn operates new sailing voyages on the west coast of Greenland
- » Clipper Adventurer in the Canadian Arctic and circumnavigation of Ireland
- » New Spirit of Enderby itinerary in Sea of Okhotsk
- » Join a Russian sea otter survey
- » Polar Pioneer will be returning to Wild Scotland and the Faroe Islands

Several of our voyages are around **Spitsbergen**. Dutch for 'pointed mountains', this is an evocative name for the largest island of the **Svalbard archipelago** in the High Arctic, 1,300km from the North Pole. It has a fascinating history of arctic exploration and whaling. The scenery is dramatic – snowy peaks rise majestically through huge ice-caps, glaciers creep down valleys to the sea and sparkling ice walls enclose deep fjords. All this is surrounded by the glistening pack-ice as we walk along rocky shores. Since the banning of hunting in the 1970s, the populations of bears and walrus have dramatically increased and you are almost certain to see these magnificent creatures on your voyage.

East Greenland is one of the least visited places in the High Arctic since permission to land on the coast of the National Park is granted to very few operators. Our voyages to East Greenland cover the beautiful fjord system of **Scoresby Sund** and the scenically spectacular south east coast. Since they take place towards the end of the Arctic summer when the ice has receded, the autumn colours should brighten the tundra and there is an excellent possibility of seeing the Northern Lights.

We also sail to **Ireland, the Scottish Islands, Russia, the Canadian Arctic and the High Arctic.**



The descriptions in the following itineraries are a guideline only, since the routes taken and the landings made will be dependent on ice and weather conditions. We are happy to supply you with more detailed descriptions, day-by-day itineraries and reports of similar voyages in previous years on request.

Where activities are available on certain voyages they are shown here. These are optional, for which a supplement is payable.

PHOTOS: Adventure Canada; Quark Expeditions; iStockphoto and Rinie van Meurs, Oceanwide Expeditions.



SCOTTISH ISLANDS, ARCTIC NORWAY AND GREENLAND



» itineraries «

Fair Isle, Jan Mayen, Spitsbergen | 10 days

This voyage fits neatly for those who want to combine a little of Scotland with the magical Norwegian coast and end with two days in Spitsbergen. It starts in **Aberdeen** and journeys to **Fair Isle** and **Jan Mayen Island** before travelling north to **Longyearbyen**.

- » ship « **Plancius**
- » when « 9 – 18 June 2012
- » guide price « **£1,995** per person based on twin cabin (private facilities)

Around Ireland | 11 days

This voyage will circumnavigate **Ireland** from **Dublin** to **Dublin**, exploring its scenic coastline of rugged headlands and bays and calling in at charming harbours.

- » ship « **Clipper Adventurer**
- » when « 4-14 May 2012
- » guide price « Call us for price

Wild Scotland and the Faroe Islands | 14 days

A journey among the remote islands north and west of Scotland revealing hidden lochs, diverse wildlife, picturesque villages and a jagged coastline steeped in Neolithic history.

- » ship « **Polar Pioneer**
- » when « 11-24 June 2012
- » guide price « Call us for price

Spitsbergen in depth | 14 days

A complete circuit of **Spitsbergen**, the largest island in the Svalbard archipelago, and one of the longest voyages of its kind. Numerous visits are made to outlying islands where you'll see scores of nesting seabirds, walrus lolling on the shores, and polar bear, prowling the ice edge. Spitsbergen also boasts a remarkably diverse landscape, offering you the chance to explore everything from jagged mountain peaks to sweeping polar deserts.

- » ship « **Akademic Sergey Vavilov**
- » when « 10 – 23 July 2012
- » guide price « **£5,745** per person based on twin cabin (shared facilities)
- » activities « Kayaking

Scoresby Sund – Aurora Borealis | 11 days

By early autumn the ice floes have usually dispersed and it is possible to enter the fjords of **East Greenland**. The days are still long, but temperatures can drop below freezing and the scenery of stark ice contrasts with the rich autumnal colours of the tundra. We visit a modern settlement and witness traditional Greenlandic culture. We should see birds moving south on migration, musk oxen, seals and possibly narwhals. On clear nights we hope to see the **Aurora Borealis**.

- » ship « **Antarctic Dream**
- » when « 5 – 15 September 2012
- » guide price « **£4,370** per person based on twin cabin (private facilities)



SVALBARD ARCHIPELAGO (SPITSBERGEN)

“The holiday was outstanding – we saw so much – 18 Polar Bears on one day, 31 in total. The boat was excellent.”

Mr and Mrs Alan Black,
Around Spitsbergen, Antarctic Dream

North/around Spitsbergen | 9-12 days

We head north along the west coast of **Spitsbergen** up to **Ny Ålesund**, the world's most northerly settlement, once a mining village and now a research centre. Depending on weather, we may go ashore on **Andøya** where common eiders and pink-footed geese nest, and sail into **Liefdefjorden**, cruising near the 5km long face of the **Monaco Glacier**. We continue into the **Hinlopen Strait**, where, on the east side, we will attempt a landing at **Nordauslandet**, home to reindeer, pink-footed geese, breeding ivory gulls and walrus. On to **Phippsøya** at 81 degrees north and, pack ice conditions permitting, to **Laagøya**, a low island where walrus congregate. We'll navigate the ice floes of **Lomfjordshalvøya** by Zodiacs and explore the bird cliffs. Near **Torrelneset** we will explore the polar desert of **Nordauslandet** next to the world's third largest ice cap, and in **Freemansundet** we plan to land on the island of **Barentsøya** to visit an old trapper's hut. Then south to the west side of **Edgeøya** landing on a beach littered with whale bones and tree trunks which have drifted over from Siberia. Our voyage ends with the side fjords of the spectacular **Hornsund** area of southern Spitsbergen. Depending on ice conditions early season voyages may only cover the west side of Spitsbergen.

- » ships « **Plancius, Antarctic Dream**
- » when « Numerous departures
June – August 2012
- » guide price range « **£4,320 – £5,615** per person based on twin cabin (private facilities)
- » activities « Diving, kayaking, hiking (hikes of approx. 5-7 hours), trekking (away from ship, 2 nights in tents), snow shoeing, photo workshop
- » key info « One of the August voyages hopes to make it to the rarely visited **Kvitøya** farthest to the east, close to the Russian territory

North East Greenland | 15 days

Between the high ice-cap of North East Greenland and the sea is a broad strip of low country that is free of snow in summer and covered in places with rich vegetation that supports much wildlife, from musk oxen to butterflies. Some of the people of **Ittoqqortoormiit**, the main settlement in the region, still make a living hunting polar bears, musk oxen, seals, whales and seabirds.

Crossing from **Spitsbergen** we keep watch for fin, humpback and minke whales and approach East Greenland, landing at **Myggebugten**. Moving south to **Scoresby Sund** we land near a glacier and encounter huge icebergs before disembarking finally in **Akureyri** in north Iceland.

- » ships « **Plancius, Antarctic Dream**
- » when « 25 August – 8 September,
24 August – 7 September 2012
- » guide price « **£6,145** per person based on twin cabin (private facilities)
- » activities « Kayaking, photo workshop

PHOTOS: Rinie van Meurs, Oceanwide Expeditions; Arcturus; Marloes Tiggeoven, Oceanwide Expeditions.

“The holiday totally fulfilled a lifetime ambition to visit the Arctic but not on a cruise ship. Everything was effortlessly tailored to the wishes of those on board – on numerous occasions the skipper changed course to allow us to see something we had glimpsed e.g. walrus or an iceberg.”

Jane Hamilton, Sail North Spitsbergen

» itineraries «

Sail North Spitsbergen | 12-13 days

Embarking at **Longyearbyen, Spitsbergen's** administrative capital, we sail through **Isfjorden** to **Trygghamna** to visit the remains of a 17th century English whaling station. Weather permitting we will go ashore at **Fuglehuken**, where the expedition of Willem Barentsz landed and **Ny Alesund**, the northernmost permanent settlement in the world. Sailing from here to **14th July Glacier** we take Zodiacs to the breeding site for Brunnich's guillemots, little auks and puffins. On to **Magdalenafjord** and **Ytre Norskøya** which was used as a lookout point for Dutch whalers. **Raudfjord** on the north coast offers good chances for spotting polar bears and belugas and we may be able to land on the northern side of **Reindyrfla** where reindeer graze on the tundra.

We turn south after **Smeerenburg** which was the largest whaling settlement on Spitsbergen. If we are able to make land on the return journey, fit walkers can take the six-hour walk from **Colesbukta** to Longyearbyen.

- » ship « **Noorderlicht**
- » when « June, September 2012
- » guide price « From **£3,640** per person based on twin cabin (shared facilities)

Sail North/around Spitsbergen | 17 days

We aim to circumnavigate **Spitsbergen**. Early itineraries might cover the North Spitsbergen route depending on the condition of the pack ice. Later in the summer when the ice has cleared we sail through the **Hinlopen Strait** and visit **Nordautlandet** and **Edgeøya**. This route provides the greatest chance of seeing Greenland whales.

- » ship « **Noorderlicht**
- » when « July, August 2012
- » guide price « **£4,700** per person based on twin cabin (shared facilities)

Sail North, South or West Spitsbergen – Aurora Borealis | 7-9 days

These journeys cover the western half of **Spitsbergen** in September and October, just before the onset of winter, an ideal time for observing the **Aurora Borealis**. During nights with open skies we could experience temperatures of **-10°C** and new ice will be forming on the heads of the fjords.

- » ship « **Noorderlicht**
- » when « September, October 2012
- » guide price « From **£2,340** per person based on twin cabin (shared facilities)

SAIL SPITSBERGEN, LOFOTENS AND GREENLAND



Sail Lofotens – Aurora Borealis | 8 days

In the autumn the days are getting shorter in northern Norway but the daytime colours are beautiful. Expect the first snow showers, and temperatures just above freezing. At night we may be able to admire the **Aurora Borealis**. Embarking in the harbour at **Lødingen** we sail for **Tysfjord**, planning to land at **Musken**, a Sami community, and later visit the untouched wilderness area of **Hellemobotn**. We visit **Leiknes, Skarverget, Tranøy** and **Skrova**, a small, rugged island where the locals still hunt minke whales. We end our voyage at **Vestbygd** before returning to **Lødingen**.

The weather can be quite rough, so the itinerary is provisional.

- » ship « **Noorderlicht**
- » when « 8 – 15 and 15 – 22 November 2012
- » guide price « **£1,870** per person based on twin cabin (shared facilities)

Sail West Greenland | 10-15 days

This new voyage starts with a flight from **Reykjavik** to **Nuuk (Godthåb)**, **Greenland's** capital, before heading north looking for humpback and blue whales. In the **Manitsoq** area we visit a large seabird colony and see fantastic landscapes at **Evighedsfjord**. We look for reindeer at **Sydbay (Ukivik)**, where the 18th century whalers traded with the Eskimos, and at **Isortoq**. We intend to call at the small settlement on **Hunde Eijland** with its old Thule dwellings dating from the 11th century and the graves of 18th century Dutch whalers. We will make Zodiac excursions in the beautiful narrows of the **Kronprinsens Eiland** archipelago, search out Greenland whales at **Disko Island** and enjoy views across the **Jakobshavn Isfjord**, a World Heritage site. We end among the glacier and icebergs at **Ilulissat**.

- » ship « **Rembrandt Van Rijn**
- » when « May, October 2012
- » guide price « From **£2,730** per person based on twin cabin (private facilities)

Sail North Greenland | 18 days

A longer voyage beginning and ending with a charter flight from **Reykjavik** to **Upernavik**, the main town in **North Greenland**, whose people still live by hunting seal. We go ashore on **Kipak** and **Kap Shackleton** on **Agarsuit** with their huge colonies of Brunnich's guillemots. We land at **Kuvdlorsuaq** at the southern end of **Melville Bugt** and later at **Lille Renland**, where reindeer have been found. Here we can walk on the Greenland ice-cap and may encounter our first sea ice. If so, there is a chance of spotting polar bears. Other landings include **Cape Melville, Savigsvik**, the southernmost Thule settlement, and **Siorapaluk**. After calling in at **Thule**, we make a trip inland into the tundra at **Booth Sound**. Our voyage ends with **Parker Snow Bugt, Cape York** and **Kingigtorsuaq**, where 14th century Viking ruins were found.

- » ship « **Rembrandt Van Rijn**
- » when « July, August 2012
- » guide price « **£5,130** per person based on twin cabin (private facilities)

Sail Disko Bay | 10 days

Our voyage starts in **Ilulissat** and heads north to **Jakobshavn Glacier, Hunde Eijland** and the **Kronprinsens Eiland** archipelago. We sail to **Flakkerhuk** on the east side of **Disko Island**, past huge icebergs observing species such as long-tailed skuas, turnstones and grey phalaropes. Good walkers may walk to **Skansen** to rejoin the ship. At **Naajat**, we sail with Zodiacs along a kittiwake colony of more than 10,000 breeding pairs. Sailing through **Ata Sund** we reach the **Eqip Sermia** – a great glacier front, where the French explorer **De Quervain** built his station and ascended to the ice-cap before returning to **Ilulissat**.

- » ship « **Rembrandt Van Rijn**
- » when « May – July, September 2012
- » guide price range « **£3,395 - 4,465** per person based on twin cabin (private facilities)

PHOTOS: Oceanwide Expeditions and Adventure Canada.

ICELAND, GREENLAND, HIGH ARCTIC AND CANADIAN ARCTIC



*“As we slid into **Hornsund**, a glorious deep fjord, the reflections of the majestic snow peaks glimmered on the icy waters and the only sound was the mewing of kittiwakes and the crunching of keel against iceberg... Later we made an unforgettable shore landing and strolled among glorious purple saxifrage, orange lichen and boulder-strewn mossy turf to explore the bird cliffs, frenetic with noise. Our ship had a ghostly aura as she lay quietly in the bay, snow, blue sky and thin layers of drifting mist all around.”*

Fiona Brijnath

» itineraries «

Three Arctic islands – triple the adventure | 16 days

National Geographic Traveler has just named this voyage one of its 50 Tours of a Lifetime, describing it as 'one of the most authentic, most innovative, most immersive, best-guided, and most sustainable tours'. Encompassing three Arctic islands (**Iceland, Greenland and Spitsbergen**) we explore the magnificent northeast coast of Greenland with its icy fjords, rugged coastline and massive glaciers. Along the way you'll see plenty of Arctic wildlife, including musk oxen, polar bears, walrus and seals.

- » ship « **Akademik Sergey Vavilov**
- » when « 20 August – 4 September 2012
- » guide price « **£5,740** per person based on twin cabin (shared facilities)
- » activities « Kayaking

Jewels of Northeast Greenland | 15 days

Northeast Greenland is the world's largest national park with shy and elusive wildlife – home to polar bear, walrus, Arctic hare and musk ox. Marine mammals include ringed, bearded, harp and hooded seals. Ice conditions are unpredictable, often creating new opportunities to explore. If the pack ice allows, we'll attempt to reach the rarely visited **Kaiser Franz Josef Fjord**, possibly sighting seals along the coast. The first voyage spends two days in **Spitsbergen** and ends in **Iceland**. The second operates in reverse.

- » ship « **Polar Pioneer**
- » when « 7 – 21 August 2012
- » guide price « **£6,060** per person based on twin cabin (shared facilities)
- » activities « Dive options, kayaking

Epic High Arctic | 13 days

This voyage from **Resolute** to **Kangerlussuaq** takes you to the top of the world. Travelling well beyond the **Arctic Circle** and into the far **North**, we explore **western Greenland**, eastern **Baffin Island** and the route to the **North Pole**. This expedition features some of the most breathtaking scenery in the Arctic – towering ice capped mountains, fjords, and glaciers. Weather and wildlife encounters are less predictable than elsewhere in the North, but sightings of polar bear, walrus and bowhead whale are not unusual.

- » ship « **Clipper Adventurer**
- » when « 8 – 20 August 2012
- » guide price « **£6,990** per person based on twin cabin (private facilities)

Franz Josef Land expedition (by icebreaker) | 13 days

Weyprecht and Payer discovered **Franz Josef Land**, an archipelago of 191 islands, in 1873. It was the scene of several expeditions which sometimes led to dramatic and tragic events. On **Bell Island** there is the hut built by Leigh Smith in 1881 and on **Jackson Island** you can see the remains of the shelter and memorial wooden post where Nansen and Johansen spent seven months during the winter of 1895-96. We intend to visit walrus rookeries on **Stolichky** and **Appolonov Islands**, the seabird colonies on **Hooker Island** and the majestic cliffs and ice-capped mountains of **Champa Island**. Polar bears, beluga whales and narwhals are often seen around these islands which were closed to foreigners from 1928 to 1990.

- » ship « **Kapitan Dranitsyn**
- » when « 16 – 28 July, 26 July – 7 August 2012
- » guide price « **£8,290** per person based on twin cabin (private facilities)

The North Pole (by icebreaker)

| 14 days

From **Murmansk** we cross the **Barents Sea** towards **Franz Josef Land**, which was only discovered in the late 1800s. Shore landings are planned here and at 90 degrees North, the top of the world. Stand on the **North Pole** and hike on the expansive ice before continuing with a watchful eye for polar bears to **Franz Josef Land**. On its flat-topped islands you will encounter fascinating Arctic wildlife in its spectacular setting of snow and ice. Polar bears, walrus, arctic fox, seals and belugas all inhabit the region. Sightseeing by helicopter gives you an unforgettable aerial view of the ship crushing its way through the Arctic Ocean pack ice on this most memorable of journeys.

- » ship « **50 Years of Victory**
- » when « 25 June – 8 July, 6 – 19 July
19 July – 1 August 2012
- » guide price « **£15,600** per person based on twin cabin (private facilities). £900 per person early bird discount for bookings made before 31 December 2011
- » activities « Hot air ballooning (selected voyages)

Into the Northwest Passage | 17 days

We start with a monumental voyage along one of **Greenland's** longest fjords, 168km out to **Davis Strait** as we cross into the **Arctic Circle**. Turning the corner, the ship heads north, with stops along the **Sisimiut** coast, and at **Ilulissat** where we marvel at the vast ice fields. At **Karat Fjord**, we'll hike through the tundra, and after **Upernavik** cross the **Davis Strait** to **Nunavut**. From here we sail into the famed **Northwest Passage**, looking for narwhal and bowhead whales before landing on **Devon Island** and **Beechey Island** to visit the chilling site of the lost Franklin Expedition. Finally we enter **Bellot Strait** and **Queen Maud Gulf**, before arriving in **Kugluktuk**.

- » ship « **Clipper Adventurer**
- » when « 18 August – 3 September 2012
- » guide price « **£9,240** per person based on twin cabin (private facilities)



FOR THE ACTIVE: Pick the hiking-focused voyages – you can do some great walks of 6-7 hours on selected days.

TOP TIP: Book a Scotland to Spitsbergen voyage and then the consecutive North Spitsbergen one. It's fun to leave the UK by ship and you will get a discount off the second voyage.

MY FAVOURITE PLACE: When I'm not tundra hiking, standing on the foredeck watching for whales.

An exquisite land of snow covered volcanoes, lava fields, hot springs, geysers, lush valleys, tundra, fast flowing rivers and rugged coastline, Russia's Arctic Far East simply cries out to be discovered. Early summer is the best time to see migrating and breeding birds, land and sea mammals and wild flowers.

» itineraries «

Sea of Okhotsk | 19 days

Journeying from Sakhalin to Petropavlovsk, this voyage visits the Sea of Okhotsk or the 'Sea of Hunters', yet despite the hunting that has gone on over the years, this sea remains one of the richest in the world. Little, however, is known about it – the freshwaters of the Amur River flow into the vast, naturally-sheltered sea and freeze into ice-floes that make it impassable for much of the year. To our knowledge, this is only the second expedition of its kind to visit the region.

A centre for 19th century whalers, whale populations are now recovering and we hope to see a number, including a rare western population of grey whale, as well as bowhead whales. Ribbon seals and tufted puffins are also on our list as well as wolves, Arctic fox and the Kamchatka brown bear.

- » ship « Spirit of Enderby
- » when « 6 – 24 June 2012
- » guide price « £6,990 per person based on twin cabin (shared facilities)

Sea otter survey in the Kurils | 19 days

Here is the chance to be a part of a genuine conservation and research project working to protect the sea otters of the Kuril Islands and Kamchatka. Your participation in this new voyage will be invaluable, joining a team of researchers who will undertake a detailed survey of the food resources available to otters. There are also opportunities for divers to join an underwater team to undertake bottom sampling as well as free time for birding, botanising, photography and hiking.

- » ship « Spirit of Enderby
- » when « 8 – 26 May 2012
- » guide price « £4,640 per person based on twin cabin (shared facilities)

Across the top of the world | 17 days

Discover the north eastern part of Eurasia (Chukotka) in a way that has never been possible before. On this expedition we cruise across the Arctic Circle through the Bering Strait and into the Arctic Sea. It will be midsummer with 24-hour daylight and the ice will have retreated. On shore you will meet the Chukchis, who have learned how to live in one of the harshest environments on the planet. We plan two days at Wrangel Island, a world class nature reserve, often referred to as the 'polar bear maternity ward'. This voyage also includes an overnight camping expedition to the tundra inland from Egvekinot to spend the night with traditional reindeer herders.

- » ship « Spirit of Enderby
- » when « 24 July – 9 August,
7 – 23 August 2012
- » guide price « £8,290 per person based on twin cabin (shared facilities)



RUSSIAN ARCTIC

In the wake of Bering | 17 days

This expedition is as unique as the First Kamchatka Expedition of 1725 - 1730 led by Danish explorer Commander Vitus Bering on orders from the Russian Tsar, Peter the Great. Departing from Petropavlovsk-Kamchatskiy, a city named after Bering's two ships built here for the second Kamchatka (Great Northern) Expedition, we sail 'north by north east' to discover wildlife and wilderness that few people have seen or experienced. It is a land of extremes and myriad environments, including snow-capped active volcanoes, geothermal regions, vast forests, extensive tundra, uninhabited islands and rich oceans.

Every day we will search for the best wildlife experience, hoping to find one bird in particular – the extremely rare and 'globally vulnerable' spoon-billed sandpiper.

- » ship « Spirit of Enderby
- » when « 23 June – 9 July 2012
- » guide price « £7,390 per person based on twin cabin (shared facilities)

Birding in the Russian Far East | 15 days

Commencing in Sakhalin, this voyage covers the full Kuril Island region with its stunning volcanoes and wide diversity of birds. The Kuril Island chain comprises 32 islands that stretch between Russia and Japan across the Bering Sea. The larger islands are inhabited, and most people still make their living from the sea. Here you will see gigantic herbs as well as bear, foxes, seals, sea lions, fur seals and otters. The Kamchatka Peninsula is a land of bays and snow-capped volcanoes, alpine meadows and lowland forests. The seas washing their coasts are among the world's most productive and the area teems with birds and marine mammals, as do the remote Commander Islands, which we also visit.

- » ship « Spirit of Enderby
- » when « 25 May – 8 June 2012
- » guide price « £6,895 per person based on twin cabin (shared facilities)

PHOTOS: Heritage Expeditions.



VOYAGES – THE ANTARCTIC

The Antarctic, particularly the peninsula or 'White Continent' has an incomparable and irresistible beauty – this magical frozen land with its awe-inspiring glaciers and rich diversity of bird and wildlife resonates with the history of intrepid explorers and epic struggles for survival. We offer a range of voyages on icebreakers and expedition ships that is continually changing, so if you cannot find exactly what you want here we will happily make suggestions on places and optional activities to suit your requirements.



Most of our voyages depart from **Ushuaia** at the southern tip of South America and cross the **Drake Passage**, spending several days visiting the **South Shetland Islands** and the **Antarctic Peninsula**. The peninsula is a spectacular chain of mountains and glaciers and is the richest part of Antarctica for wildlife. The waters are sheltered by islands which makes for comfortable sailing and easy landings. Some of these voyages also visit **South Georgia** and the **Falkland Islands**.

South Georgia is a 100-mile long island with mountains and glaciers that equal the grandeur of Antarctica. There is also a green fringe of vegetation that supports a greater variety of wildlife, including the magnificent king penguin and wandering albatross, many smaller birds such as the endemic pintail and pipit, as well as teeming colonies of fur seals. For those interested in its history, many voyages visit the scene of Shackleton's epic crossing of the island.

The Falkland Islands are different again: an archipelago of large and small islands with an even more varied wildlife and relaxed lifestyle among the human inhabitants.

More adventurous voyages head for the **Ross Sea**, sometimes called 'The Far Side of Antarctica' – on an icebreaker to visit emperor penguin colonies and Scott's and Shackleton's huts. Because some of the vessels are comparatively small, early booking is recommended.



The descriptions in the following itineraries are a guideline only, since the routes taken and the landings made will be dependent on ice and weather conditions. We are happy to supply you with more detailed descriptions, day-by-day itineraries and reports of similar voyages in previous years on request.

Where activities are available on certain voyages they are shown here. These are optional, for which a supplement is payable.

» new for 2012 «

- » **Sea Spirit** which carries 112 passengers offers extra comfort in the **Antarctic**
- » **Orion 1** – a new ship which brings a new dimension of luxury to expedition voyages
- » **Spirit of Enderby** visits Scott and Shackleton's huts from **New Zealand**
- » New itinerary for **Mawson's Antarctica** with **Orion 1**



DON'T MISS: Camping overnight on the peninsula to experience Antarctic weather close up. It might seem tough at the time but you won't regret it! Don't forget to pre-book as it's popular.

READ: *Captain Scott* by Sir Ranulph Fiennes and *South* by Sir Ernest Shackleton.

MY BEST MEMORY: Leopard seals circling and diving under our Zodiac while hunting penguins.

TOP TIP: Dress in many layers – you will need them.

PHOTOS: Antarctica XXI; Quark Expeditions and Arcturus.

"It was a fascinating voyage with lasting impressions. The wildlife both on the Falklands and on Antarctica is incredibly rich... Last but not least I should like to thank you for the impeccable organisation on your part."

Mr Hubert Kalf,
Epic Antarctica icebreaker voyage

» itineraries «

Classic Antarctic Peninsula with South Shetlands | 13-15 days

These voyages offer the best introduction to the **White Continent**. They begin in **Ushuaia** and sail across the **Drake Passage** directly to the **Peninsula** providing good chances to see gentoo and adie penguins and humpback whales. In addition to seeing as much as possible of the peninsula's wildlife and scenery, some voyages also include the **South Shetland Islands** where you visit the abandoned whaling station on **Deception Island**. The return voyage is through the **Gerlache Strait**, home to leopard seals and blue-eyed shags, followed by a visit to a research station. Landings are usually made twice a day so that all species of penguins, seals and other wildlife can be viewed. Some landings visit historic sites and operational bases while Zodiac cruises offer an exciting alternative to landings.

- » ship « **Plancius**
- » when « December 2012 and February, March 2013
- » guide price range « **£5,820-£7,585** per person based on twin cabin (private facilities)
- » activities « Diving, kayaking, snow shoeing, camping, photo workshop

Antarctic Peninsula Basecamp Plancius | 15 days

Basecamp voyages offer a different concept – where a selection of activities (such as kayaking, camping, hiking, soft mountain climbing and photo workshops) will be packed into one departure and included in the price of your voyage. The vessel will stay for two or three days at specific locations in order to allow more active passengers a comfortable hub for their wide-ranging pursuits.

- » ship « **Plancius**
- » when « 20 November – 4 December 2012, 24 February – 10 March 2013
- » guide price « **£7,175** per person based on twin cabin (private facilities)
- » activities « All optional activities are free. Diving, kayaking, hiking (hikes of approx. 5-7 hours), snow shoeing, mountaineering, camping, photo workshop

Crossing the Polar Circle | 15 days

These extended voyages follow the **Antarctic Peninsula with South Shetland Islands** itinerary but continue further south visiting **Crystal Sound** and the **Fish Islands** where you will see one of the most southerly colonies of adie penguins. We hope to reach **Detaille Island**, our southernmost point, south of the **Polar Circle**. There is an additional programme for scuba divers at a supplement.

- » ship « **Plancius**
- » when « 7 – 21 March 2013
- » guide price « **£7,170** per person based on twin cabin (private facilities)
- » activities « Diving, kayaking, camping



FALKLAND ISLANDS, SOUTH GEORGIA AND ANTARCTIC PENINSULA



Falklands, South Georgia, Antarctic Peninsula | 22 days

These longer voyages visit the **Falkland Islands** calling at **Port Stanley**, then head for **South Georgia** spotting a great number of seabirds as we cross the **Convergence**. Three days are spent in **South Georgia** visiting historic sites encountering fur and elephant seals, albatross and petrels. Then to the **Antarctic Peninsula** via **Orcadas Station** in the **South Orkneys** for three days around the **Peninsula** and **South Shetland Islands**. On the return trip to **Ushuaia** a profusion of seabirds follows the ship.

- » ship « **Plancius**
- » when « November 2012 and January 2013
- » guide price « **£10,285-£11,655** per person based on twin cabin (private facilities)
- » activities « Snow shoeing

Antarctic Dream expedition | 11-14 days

A comprehensive itinerary to the **Antarctic Peninsula** and **South Shetland Islands** on board the 80 passenger **Antarctic Dream** with several voyages between November and March to choose from. **Aitcho Island, Neko Bay, Cuverville Island, Petermann Island, Deception Island** and **Pendulum Cove** will be just some of the superb landings on offer, weather permitting.

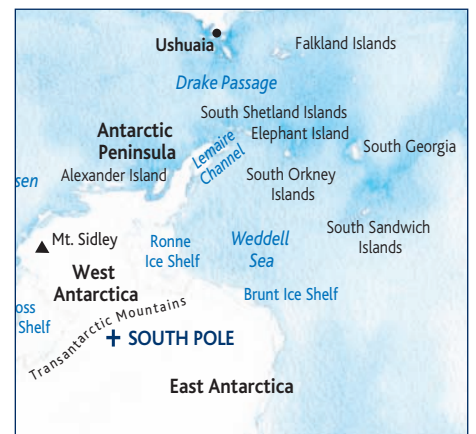
- » ship « **Antarctic Dream**
- » when « Various departures November 2012 – March 2013
- » guide price range « **£5,890 – £7,390** per person based on twin cabin (private facilities). Prices vary by departure
- » activities « Kayaking, camping
- » key info « Some voyages have a flight option to avoid one of the two Drake Passage crossings

Exclusive South Georgia with Shackleton crossing | 21 days

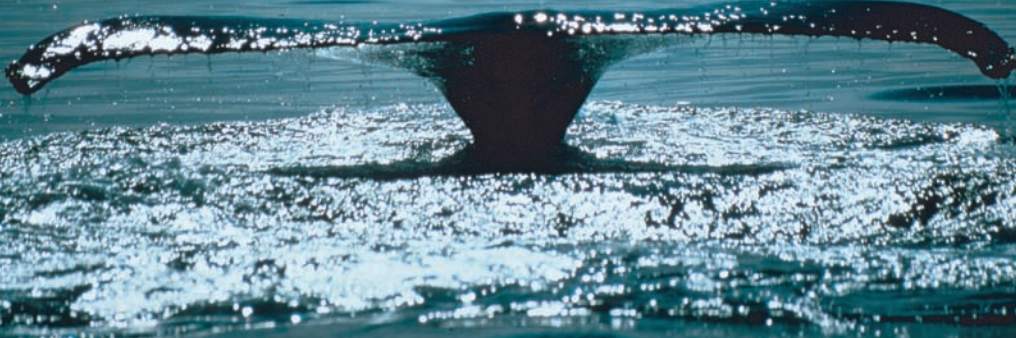
Here we concentrate on the flora and fauna of **South Georgia**. You can either make a normal sea voyage with Zodiac excursions and hikes whilst circumnavigating the islands or, for serious ski explorers only, make an unsupported 40-50km ski trek retracing part of **Shackleton's** historic route from **King Haakon Bay** to **Stromness**. The trek crosses alpine passes and glaciers by ski or snowshoe or hauling sledges. Those exploring by sea have the chance to make a shorter trek following the final leg of **Shackleton's** epic hike.

- » ship « **Plancius**
- » when « 15 October – 4 November 2012
- » guide price « **£8,160** per person based on twin cabin (private facilities)
- » activities « Snow shoeing, ski trekking

PHOTOS: Polar Star Expeditions; Basecamp Explorer and Jan Veen, Oceanwide Expeditions.



WEDDELL SEA, ANTARCTIC PENINSULA, ROSS SEA



» itineraries «

Weddell Sea and Antarctic Peninsula | 15 days

A tremendous sense of excitement spreads through the ship as we enter the **Weddell Sea** on this voyage to the **Antarctic Peninsula's** wild side. Ahead are the locations where Shackleton's and Nordenskjöld's polar survival epic were played out, astonishing vistas and some of Antarctica's greatest penguin rookeries. The area is known for its own particular weather and unpredictable ice movements so we pick our landings accordingly. Possible landings include **Snow Hill Island** to visit Nordenskjöld's Hut, fossil-rich **Seymour Island** or **Paulet Island**, with its huge penguin rookeries and historical remains.

- » ship « **Polar Pioneer**
- » when « February 2013
- » guide price « From **£6,850** per person based on twin cabin (shared facilities)
- » activities « Diving

Explorer's quest: Falklands, South Georgia and the Peninsula | 22 days

This 22-day expedition is for those who like always to be on the move. It includes three different environments, five penguin species and diverse landscapes – a quintessential Antarctic voyage.

- » ship « **Sea Spirit**
- » when « Various departures November 2012 – January 2013
- » guide price « From **£10,745** per person based on twin cabin (private facilities)
- » key info « The ship's open bar is included in your voyage

Antarctica XXI | 10 days

Antarctica XXI is a unique air cruise to Antarctica. Avoid the notorious two day crossing of the **Drake Passage** and instead take a one and a half hour flight from **Punta Arenas** in Southern Chile to **King George Island**, the largest island of the **South Shetland Archipelago**, where you board your expedition ship. For the next five days you are on a Classic Antarctic Peninsula voyage with active adventures, several landings daily by Zodiac and a programme of enjoyable on-board lectures. The aim of the expedition is to cross the **Lemaire Channel** at latitude 65 degrees south. For those who wish to experience crossing the **Drake Passage** in one direction, the first and last voyages of the season include a one way crossing by air.

- » ship « **Ocean Nova**
- » when « Various departures December 2012 and January 2013
- » guide price « **£8,435** per person based on twin cabin (private facilities)

Mawson's Antarctica | 21 days

Cape Denison, site of Sir Douglas Mawson's hut from the historic 1911-1913 expedition and a time capsule from a great era of exploration, is the real highlight of this voyage. More people have stood at the top of Mt. Everest than have been privileged to enter this historic hut so it is a very special experience. The voyage also takes us to **Port Martin**, the site of 100 grounded icebergs, and **Dumont d'Urville**, the French base renowned for its rich local wildlife, including colonies of adelic and emperor penguins.

- » ship « **Orion 1**
- » when « 19 December 2012 – 8 January 2013
- » guide price « **£13,990** per person based on twin cabin (private facilities)

"Most helpful, informative, and friendly service at all stages. Absolutely spectacular trip which exceeded my already high expectations. Brilliant value for money, notwithstanding the high cost. It says it all that I was looking at your brochure for a future trip, as soon as I got back!"

Judith Philip, Antarctic Peninsula

In the wake of Scott and Shackleton | 33 days

The **Ross Sea** is one of the most remote regions and is only accessible for two months each year when the ice thaws. This region was the magnet that drew many of the most famous explorers and adventurers including Scott, Shackleton and Amundsen. There are five historic huts that we visit and learn more of their history and the explorers' achievements. The **Ross Sea** region is the breeding ground for millions of adelic and emperor penguins and we regularly encounter both species. We have permits for landing in the sub-Antarctic islands **Auckland**, **Campbell** and **Macquarie**.

- » ship « **Spirit of Enderby**
- » when « 7 January – 8 February 2013
- » guide price « **£13,835** per person based on twin cabin (shared facilities)

Scott and Shackleton's Antarctica | 23 days

We cover some of the polar regions famously charted during the first race to the **South Pole** by pioneering explorers Scott and Shackleton 100 years ago. The **Ross Sea** coast extends from the ice shelf northwards until it reaches the very tip of **Victoria Land** and **Cape Adare**. During our time in the **Ross Sea** region we will attempt a variety of opportunistic landings, subject to weather conditions.

- » ship « **Orion 1**
- » when « 24 January – 15 February 2013
- » guide price « **£15,395** per person based on twin cabin (private facilities)



READ: *Endurance: Shackleton's Incredible Voyage* by Alfred Lansing; *A First-Rate tragedy: Robert Falcon Scott & the Race to the South Pole* by Diana Preston and *Mawson's Will* by Lennard Bickel.

LET US KNOW: If you have a former connection with any of the polar regions we visit by ship. Perhaps you or a relative lived on one of the bases, or were a member of a past expedition? We can offer you the chance to share your experiences, diaries or photographs with others on your voyage. In the past we've even got the ship to make unscheduled visits to tie in with such an event.

TOP TIP: If you are considering one of the **Ross Sea** voyages out of New Zealand, why not make the most of your visit and ask us about tailor-making a holiday there to fit round your voyage.

PHOTOS: Quark Expeditions and Heritage Expeditions.

VOYAGES – THE SHIPS

Many of the vessels shown here offer a variety of cabins. Our guide prices are based on twin cabins with shared or private facilities, but we will be happy to quote for single occupancy, triple, quadruple or superior cabins and suites (where available) on request.

Arcturus works with almost all of the smaller ships currently operating in the Arctic and Antarctic. We navigate fjords, passages and ice floes and use Zodiac rigid inflatable boats guided by the ship's expedition staff for shore excursions. All fitness levels are catered for and there is a comprehensive programme of lectures. Because we specialise in tailor-making holidays all over the world we will be delighted to add on pre or post-tour arrangements as required.



50 Years of Victory is a nuclear powered polar-class icebreaker and the largest fitted for passenger travel to the North Pole. She sails from Murmansk, Russia and has a steel ice belt enabling her to crush through ice up to 2.5 metres thick.

- » accommodation « 128 passengers in 64 en-suite cabins of five categories, all with ocean views
- » itineraries « High Arctic
- » operator « Poseidon and Quark



The Spirit of Enderby is a fully ice-strengthened polar research vessel with comfortable accommodation and an experienced Russian crew. All voyages are accompanied by experienced naturalists and guides. She has a fleet of Zodiacs and specially designed hovercraft for unprecedented over-ice capability.

- » accommodation « 48 passengers
- » itineraries « Russian Far East, Arctic Russia, Antarctic
- » operator « Heritage



Akademik Sergey Vavilov is equipped with Zodiacs for ocean level exploration and kayaks for optional paddling among ice floes. Her powerful diesel engine and bow and stern thrusters make her highly manoeuvrable, while a shallow draft permits passage through channels impassable by larger ships.

- » accommodation « 110 passengers
- » itineraries « Arctic
- » operator « Quark



Sea Spirit is an ice-class 1D vessel and remarkably comfortable. All cabins have private facilities and exterior views. The deluxe cabins, suites and the Owner's Suite all have private balconies. There is an elevator, an open bar, gym and a hot tub. You will also find flat screen TVs and DVD players in every cabin and a 10MB communications access card is included in every voyage.

- » accommodation « 112 passengers
- » itineraries « Antarctic
- » operator « Quark



Polar Pioneer was built in Finland in 1985 as an ice-strengthened research ship and refurbished in 2000. She has a bar/lounge/library area, a small fleet of Zodiacs and an open bridge policy.

- » accommodation « 56 passengers, all cabins have outside portholes and ample storage space
- » itineraries « Scottish Islands, Arctic, Greenland, Antarctic
- » operators « Aurora and Waterproof Expeditions



Antarctic Dream is a Dutch-built ice-reinforced vessel which originally served the Chilean Navy. She has a spacious dining room/observation lounge, bar, lecture room, fitness room and sauna and passenger bridge.

- » accommodation « 80 (Antarctic)/83 (Arctic) passengers in twin cabins with private facilities, most with portholes or windows
- » itineraries « Spitsbergen, North East Greenland, Antarctic
- » operators « Antarctic Shipping and Oceanwide



Noorderlicht was built in 1910 in Flensburg, Germany as a three-masted schooner and served as a light vessel on the Baltic. In 1991 the present owners purchased the hull and re-rigged and refitted her as a two-masted schooner. Would-be sailors can help the crew of five to sail her.

- » accommodation « 20 passengers in twin cabins (upper and lower bunks without ladder)
- » itineraries « Spitsbergen, Lofoten Islands
- » operator « Oceanwide



Plancius started life in 1976 as an oceanographic research vessel for the Royal Dutch Navy and was purchased by the operator in 2006. Completely rebuilt, she is now comfortable, nicely decorated and very well suited to exploratory educational voyages.

- » accommodation « 110 passengers. All cabins have private facilities in quadruple and twin formation, with portholes or windows
- » itineraries « Scottish Islands, Spitsbergen, North East Greenland, Antarctic
- » operator « Oceanwide



Clipper Adventurer is a handsome expedition vessel in the style of great ocean liners. She has all new outside cabins with lower beds and private facilities. There is a main lounge, bar, Clipper Club, library/card room, gymnasium and gift shop and a fleet of 10 Zodiacs. An ice class rating of A-1 allows her to go to places of which larger cruise ships can only dream.

- » accommodation « 118 passengers
- » itineraries « Ireland, Greenland, Canadian Arctic
- » operator « Adventure Canada



Rembrandt Van Rijn was built as a herring lugger early last century. She was rebuilt as a three-masted passenger sailing schooner and used in Spitsbergen and The Galapagos until 2001, and was recently completely rebuilt and refurbished. Although not ice-class she has a reinforced bow and she offers good open deck viewing areas.

- » accommodation « 34 passengers in mainly en-suite cabins, some with portholes
- » itineraries « Greenland
- » operator « Oceanwide



Kapitan Dranitsyn is available again for passenger use after recent work with oil companies. She has on-board helicopters and a fleet of Zodiacs, a gym, sauna and swimming pool.

- » accommodation « 100 passengers
- » itineraries « Franz Joseph Land
- » operator « Special Travel Club



Ocean Nova has clean, crisp Scandinavian styling and is excellent for Antarctic exploration. Purpose-built to sail ice-choked waters, her specially strengthened hull has enabled her to park in the ice of the Weddell Sea!

- » accommodation « 62 passengers
- » itineraries « Antarctic
- » operator « Antarctica XXI



Orion 1 is the epitome of elegance, despite being custom built for expedition cruising. Her fittings and furnishings and the range and calibre of her on-board recreational facilities make her more like a mega-yacht than a cruise ship and her guests are cared for in lavish comfort by a crew of 75.

- » accommodation « 106 passengers in en-suite cabins
- » itineraries « Antarctic
- » operator « Orion Expedition cruises



ARCTURUS

THE POLAR ARM OF FAR FRONTIERS TRAVEL

Ninestone, South Zeal, Devon EX20 2PZ
telephone/fax: (+44) 01837 840640
email: fiona@arcturusexpeditions.co.uk
web: www.arcturusexpeditions.co.uk