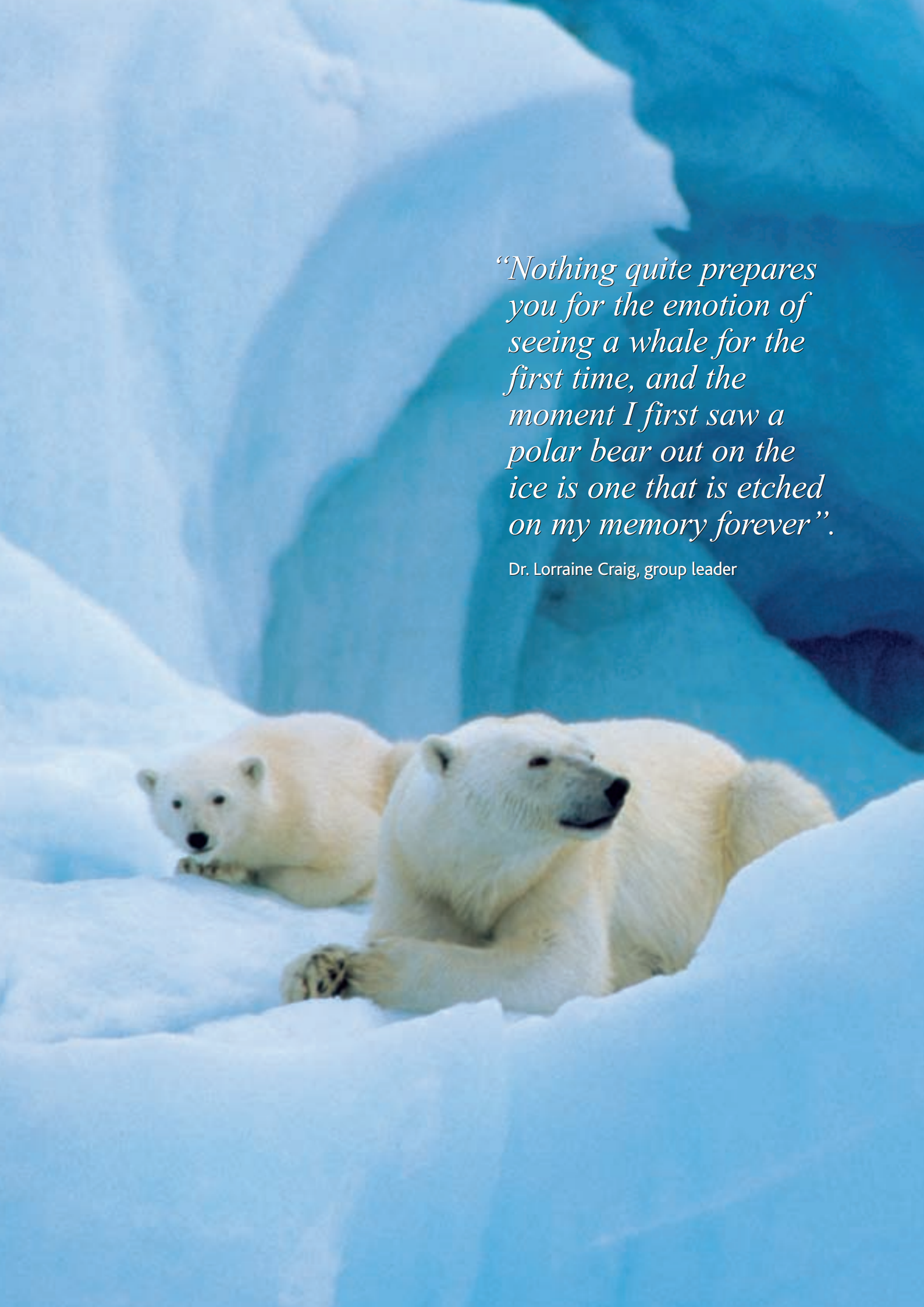


ARCTURUS

THE POLAR ARM OF FAR FRONTIERS TRAVEL

VOYAGES AND EXPEDITIONS
2009-2010

A photograph of two polar bears resting on a large, white ice floe. The bear in the foreground is lying down, looking towards the right. The bear in the background is also lying down, looking towards the left. The ice is bright white and has a textured surface. The background is a deep blue, suggesting the ocean.

“Nothing quite prepares you for the emotion of seeing a whale for the first time, and the moment I first saw a polar bear out on the ice is one that is etched on my memory forever”.

Dr. Lorraine Craig, group leader

ARCTURUS



Welcome to the 2009-2010 catalogue of **Arcturus**, the polar arm of **Far Frontiers Travel Ltd**. This year we have introduced colour and reduced the size of our brochure. Since all our trips are accompanied by excellent trip dossiers, we just give you a taster here of the voyages and expeditions that we'll be running over the next twelve months. I hope that you will be as excited as I am about the possibilities on offer.

Upon enquiry, we will send you a detailed itinerary supported by maps and illustrations of each voyage or expedition,

which will help to answer any questions that you may have. We are always ready to talk to you about any aspect of your plans so, if you are undecided as to exactly what you would like to do, then please just pick up the phone and ask – we will be happy to make suggestions.

We are delighted to have **Dr. Lorraine Craig** on board to advise on polar matters, talk about her portfolio of private trips and to discuss client's requirements prior to booking.

Fiona Brijnath, Director

ABOUT US

Arcturus, based in Devon, is a small niche travel company specialising in polar tours. In 2009, **Arcturus** will have been operating for 30 years. As one of the foremost operators to the polar regions, we offer an unparalleled selection of extraordinary expeditions and voyages to the Arctic, Antarctic, Norway, Greenland, Iceland and some of the remotest parts of Russia. Now owned by and operating as the polar division of **Far Frontiers Travel Limited**, the company was, in its early days, one of the pioneers of wildlife tours in the Arctic. Our itineraries have their genesis in years of local research and experience and many of the contributions to the programmes we offer today were made by early travellers to these regions for scientific research, expeditions or simply for pure pleasure!

At **Arcturus**, we arrange our own expeditions, mostly camping, walking, dog-sledging and skiing, with an emphasis on enjoying wildlife and scenery in remote places. We also act as agents for selected operators for adventure voyages in the Antarctic and the Arctic.

The company is run by **Fiona Brijnath** who, with her life-long career in the travel business, has developed tailored travel itineraries for well over 15 years, many of them for clients who return time and again. She will be your first point of contact, ably assisted by **Dr. Lorraine Craig PhD** who was previously Head of Research and Higher



Education at the Royal Geographical Society and Director of the Cambridge Arctic Shelf Programme. In addition to being past president of the Arctic Club, Lorraine has led walking and skiing expeditions for **Arcturus**

in North East Greenland. She is currently based at the Royal School of Mines, Imperial College London and, when she is not lecturing, will continue to advise on all polar matters, lead tours and develop new destinations.

Fiona's travel to remote destinations has equipped her with unrivalled expertise in many countries around the globe and **Far Frontiers Travel** owes its success to her particular forte in

arranging bespoke holidays and multi-country itineraries. You are unlikely to find anyone who gives more attention to personal service and detail or who is better equipped to advise on how to make yours the trip of a lifetime.

Prices

All the guide prices quoted here include international flights from London in economy class, internal transport, transfers to the embarkation point where it is possible to pre-book and accommodation based in twin rooms/cabins with meals as specified. Guide prices for voyages are based on twin cabins with shared or private facilities and we can provide prices for single occupancy and superior cabins and suites (where available) on request. Trips are fully-guided either from the UK or locally. We also include fuel surcharges known at the time of going to print. Please note however, in a climate of fluctuating fuel prices, we are bound to pass on any additional surcharges as we are informed of them.

Pre and post-tour arrangements

Because we specialise in tailor-making holidays all over the world we are more than happy to make additional pre and post-tour arrangements on your behalf. For example, we can suggest some fantastic extended trips to Chile, Argentina or Ecuador and The Galapagos for those on

Antarctic voyages, or if you are visiting Arctic Russia, you could begin or end the trip marvelling at the fabulous sights in Moscow and St. Petersburg. Please call us to discuss your individual requirements.

Your Financial Protection

The air holiday packages in this brochure are ATOL protected by the Civil Aviation Authority. Our ATOL number is ATOL 9270. Please see our booking conditions for more information.

Total Payment Protection (TOPP) Policy cover: In compliance with the UK Package Travel, Package Holidays and Package Tours Regulations 1992 and the Civil Aviation (Air Travel Organiser's Licensing) Regulations 1995, an insurance policy has been arranged with Travel & General Insurance Company plc to protect customers' prepayments paid in respect of: flight inclusive packages commencing and returning to the UK, non-flight inclusive packages commencing and returning to the UK, the ground handling aspects of packages where the customer is responsible for arranging travel to the destination and accommodation-only holidays offered in this brochure (and subject to the terms of the insurance policy), for: a refund of such prepayments if customers have not yet travelled, making arrangements to enable the holiday to continue if customers have already travelled or repatriation of customers to the UK in the unlikely event of our financial failure.



ARCTURUS

THE POLAR ARM OF FAR FRONTIERS TRAVEL

Ninestone, South Zeal, Devon EX20 2PZ

t/f: (+44) 01837 840640

e: fiona@arcturusexpeditions.co.uk

w: www.arcturusexpeditions.co.uk

We are grateful to the following for permission to use their photographs and acknowledge their copyright: Franco Banfi, Jan Belgers, Alex Benwell, Sonja van Berkel, Kathleen Cartwright, Lorraine Craig, Goran Ehlme, Keith Gunnar, iStockphoto, Chris Johnson, Gordon Luck, Kirsten le Mar, Rinie van Meurs, Oceanwide Expeditions, Quark Expeditions, Frank Ryding, Claudio Suter, John Weller, Hanne Zak.



Far Frontiers Travel specialises in tailor-making bespoke travel to Central Asia, China and Mongolia, East Africa, the Far East, Indian Subcontinent and the Himalayas, Indochina, Middle East, North Africa and Europe, Russia, South America and the Antarctic. We pride ourselves on providing a friendly and professional service at all times.

Far Frontiers Travel Ltd Ninestone, South Zeal, Devon EX20 2PZ

t: (+44) 01837 840640 e: fiona@farfrontiers.com w: www.farfrontiers.com

Registered in England No 5798604 Registered office: Oakley House, Tetbury Road, Cirencester, Gloucestershire, GL7 1US



EXPEDITIONS

Imagine driving your own dog sled, crossing snowy mountain ranges, landing by helicopter in a volcanic crater, eating reindeer meat with herders in their yurt, watching brown or polar bears, swimming in a hot thermal river or being serenaded by your pack dogs in the evening – a world away from everyday life. Arcturus has 30 years' experience in leading expeditions for small groups of people and can cater for varying levels of fitness. By day we take long or short hikes on foot, snow shoe or ski or explore by boat, and at night we camp in comfort. You will make friends and share priceless experiences to treasure for a lifetime.



DOG SLEDGING AND SKIING – Northeast Greenland and Scoresby Sund

Dog-sledging, dog-sledding, dog driving or mushing: there is no consensus on how to describe travelling with a dog team. Our expeditions in Greenland are more than simply dog-sledging or skiing experiences, since we travel and live with Inuit hunters and spend some time in their village. Ittoqqortoormiit (Scoresby Sund) is the only village in Northeast Greenland and some of its inhabitants still make their living by hunting seals. The village is extremely picturesque in spring with dog teams tethered in the snow outside the houses and seal skins stretched out on racks to dry. By the end of the trip you will have gained an insight into and appreciation of the lives of the Inuit people of Scoresby Sund and their hunting way of life.



"The fascination of watching an Inuit hunter communicate with his dog team provides a life-time memory... not to mention their cooking of local food!" Dr. Lorraine Craig



Dog-sledging in Liverpool Land with Inuit hunters

This is a unique experience with the Inuit hunters of Scoresby Sund, taking us around most of the coast and between the mountains of Liverpool Land. The scenery is breathtaking and we can marvel at the skill of our dog drivers and their dogs as they negotiate the pressure ridges at the capes and traverse mountain passes. When we traverse the mountains with peaks jutting up through the snow to 1,400m we see steep glaciers going down to the sea ice on the coast, covered in deep untouched snow. We might see seals, which the hunters may kill for dog food, arctic foxes and little auks returning to their nests. There is always the possibility of seeing a polar bear. At the end of

each day we will have time to walk around our campsite. Our dogs may sing before they are given their food each night, a haunting sound that echoes through the still spring air. Our hunters will cook for us and we will enjoy their friendship and kindness. We will also spend two nights in Ittoqqortoormiit, relaxing and sightseeing, and learning more about the local hunting community.

» dates «	10 - 19 April 2009
» price «	£3,990 per person
» leader «	Dr Lorraine Craig
» key info «	Group size 6-10. Participants must be able to sleep in tents

Cross-country skiing in Southern Liverpool Land

Liverpool Land is one of the most beautiful regions of Greenland. It was named by the whaler and explorer William Scoresby Jr. who wrote "... *Nothing that I have seen equals it in bold grandeur and interesting character*".

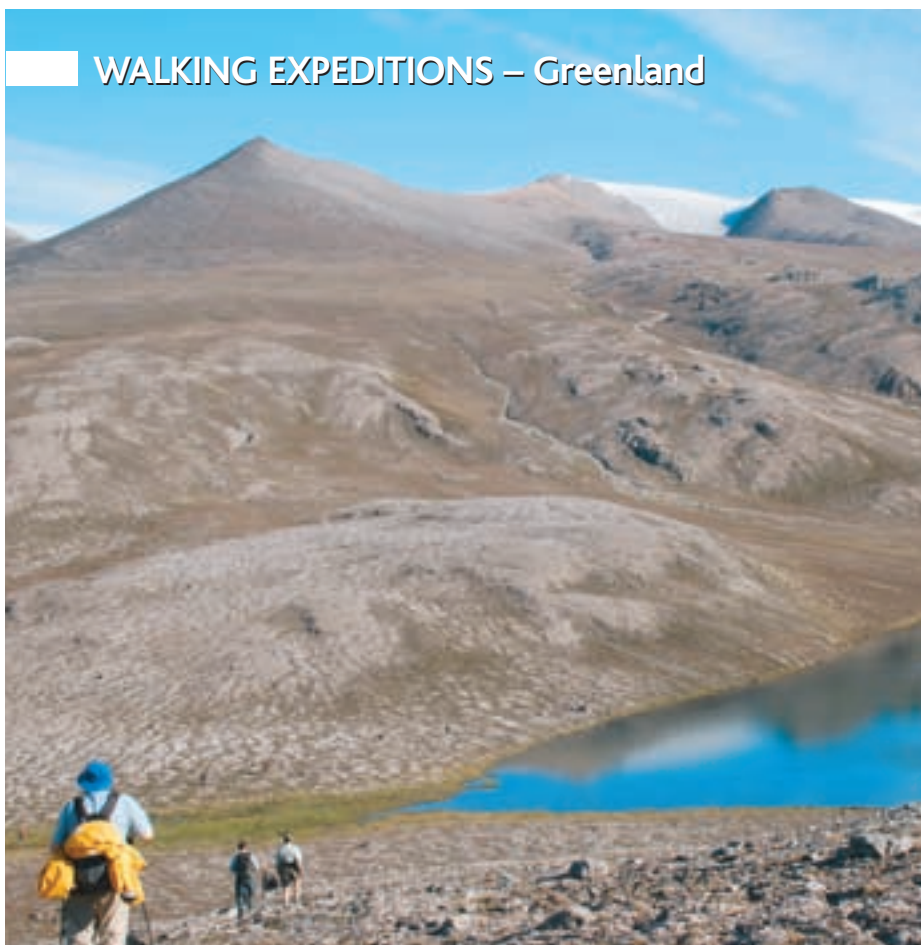
Very few people have visited this country in spring when the sea is frozen and the land is covered with snow. Our previous expeditions discovered that this is a superb area for ski-touring due to the excellent weather and wonderful mountain and coastal scenery. The combination of 1,000-1,400m peaks and long valleys leading from glaciers to the sea-ice of deep fjords makes this expedition a

fascinating prospect for cross-country skiers who are seeking a true wilderness experience without being over-extended. As a bonus we may see arctic hares, foxes and possibly a polar bear.

- » **dates** « 3 - 12 April 2009
- » **price** « £3,595 per person
- » **leader** « Dr Lorraine Craig
- » **key info** « Group size 6-10. This is exploratory cross-country skiing based in a simple house in Scoresby Sund. We will be doing our own cooking and travelling out each day with day-packs finding new routes



WALKING EXPEDITIONS – Greenland



"Icebergs floating in the world's largest fjord enhanced the beauty of the short Arctic summer. Our time on the boat was equally as fantastic as walking on colourful tundra. The Inuit guides were fascinating to travel with." Dr. Lorraine Craig



Fjords of Scoresby Sund, Northeast Greenland

The longest fjord system in the world, **Scoresby Sund** extends 350km inland and offers a perfect setting for exploring the region. Its enclosed waters are calm and navigable during the brief summer, which is remarkably warm with long periods of fine weather. This eight-day hiking trip, escorted by local Greenlanders, makes use of a local boat to cover a wide area and takes us around the island of **Milne Land** which dominates inner Scoresby Sund. We will sail close to 1,000m high basalt cliffs interspersed with glaciers and visit the site of the winter quarters of Ryder's 1891-2 Danish Scientific Expedition on **Danmark Island**. By visiting Eskimo sites, some of which date back 4,500 years, we will

Northeast Greenland at latitude 75 degrees North is a remote and dramatic part of the High Arctic and known as 'The Arctic Riviera' because of its fine settled weather. In this unspoilt wilderness the only sounds are those of the wind in the valleys, the streams and rivers, the birds, and even wolves. Conditions are near perfect for camping and we amble at a leisurely pace to enjoy the scenery and wildlife or make more vigorous ascents of mountains to get better views. The wildlife includes over 100 species of flowering plants, including arctic poppies, many kinds of saxifrage and delicate alpine gentians and speedwells. Birds include knots, dunlins, sanderlings, barnacle and pink-footed geese, red throated divers, snow buntings and long-tailed and arctic skuas. There are musk oxen, which can sometimes be approached quite closely, arctic foxes, hares, Greenland lemmings, stoats and possibly wolves which are re-occupying the area from the North, having been hunted out in the last century.

This year's expedition will explore the fjords of Scoresby Sund, hiking up to 6-8 hours each day and travelling to new locations by boat among some of the finest scenery and icebergs in the Arctic.

be able to envisage a life dominated by the need to survive by hunting. The boat covers distance rapidly, allowing us plenty of time to explore and hike on land, with longer hikes for the energetic. With 24-hour daylight we can choose to hike, boat or admire the view as we wish. Nights will be spent ashore in very comfortable campsites with a large mess tent for dining.

- » **dates** « 4 - 16 August 2009
- » **price** « £4,990 per person
- » **leader** « To be confirmed
- » **key info** « Group size 6-9. Those who prefer not to walk can stay with the boat

KAMCHATKA – Arctic Russia



“Bears (we lost count how many) eating salmon just as on wildlife programmes, amazing helicopter journeys, bathing in hot springs, active and ancient volcanoes, kilometres of birch forest and berries, the friendly people.... I talked for two days after this trip!” Dr. Lorraine Craig



Kamchatka in late summer 2009 – Bears, volcanoes, native people, reindeer herders, autumn colours

Our **Kamchatka** expedition takes place in late August, climatically one of the best times to travel and appreciate the spectacular scenery and autumn colours. In order to experience the richness of the region's flora, fauna and geology, we plan to visit as many habitats as possible including the central valley with the **Kamchatka River**, **Tolbachik**, **Kzudach**, **Mutnovsky** and **Vachkzhets** volcanoes, **Kurilskoe Lake** and the hot **Khodukta River** in the southern tundra. **Kurilskoe Lake**, part of a nature reserve, is one of the best places in the peninsula to see brown bears and Steller's sea eagles. Moving around by helicopter and truck we will enjoy a variety of experiences: watching bears feeding on the berries, salmon spawning, swimming in hot rivers and meeting the local people in the tiny settlement of **Esso** and staying overnight with the nomadic reindeer herders in the summer

There is nowhere else in the world quite like Kamchatka, which was closed to both Russians and foreigners until 1990. Now that we are able to visit we can only marvel at its spectacular scenery with its towering snow-covered volcanoes of exquisite symmetry, lava fields, hot springs, geysers, lush valleys, tundra, fast flowing rivers and rugged coastline. Due to its position on the 'Pacific Ring of Fire' it has more than 30 active volcanoes including **Klyuchevskaya Sopka** which has been emitting steam and smoke for at least 8,000 years.

The peninsula is the home of the **Itelmen**, **Eveni** and **Koryaks**, some of whom live by their traditional ways of hunting, fishing, reindeer herding and gathering wild plants. It is also home to the largest brown bear in Russia and **Steller's sea eagle**, which has a wingspan of three metres. The rivers teem with at least five species of spawning salmon and its rugged coastline is home to thousands of seabirds, including tufted and horned puffins, guillemots, cormorants and harlequin ducks, as well as seals, sea lions and sea otters. There are many endemic plants which, in the valleys, grow at an incredible rate during the summer due to the volcanically-warmed and minerally-enriched soil. On the tundra, **cassiope** and **dwarf willows** grow alongside the **crimson rhododendron camtschaticum** and **Lapland buntings** breed there. Valleys and hillsides are clothed in mixed woodlands with many wild flowers including **fritillaria camtschatcensis**, **tiger lilies**, **yellow rhododendrons** and **wild roses**. The birds range from migrating waders through **black-billed capercaillie**, **rosefinches**, **rough-legged buzzards** to the **auks** and **Steller's sea eagle**.

mountain camp. Weather permitting, we may be able to land in the crater of the **Mutnovsky Volcano** with its geysers, fumaroles, mud pools and spectacular rock formations. There will be plenty of time to follow your own interests be they ornithology, botany, geology, vulcanology, photography or walking. The trip ends in **Petropavlovsk** where we will learn its fascinating history and hear about life in Kamchatka today. This will be **Arcturus's** 24th trip to Kamchatka.

» dates «	28 August - 15 September 2009
» price «	£4,295 per person
» leader «	Dr Lorraine Craig
» key info «	Group size 12-14. The pace will be leisurely. The walks are not difficult and are entirely at the discretion of the individual



TAILOR-MADE ITINERARIES

We can offer bespoke trips tailored to your needs, in single countries or multiple destinations, which will make your expedition or voyage truly spectacular. For example, you could extend your trip to the Antarctic with a few days relaxing or riding on an estancia in Argentina, visiting the wineries of Chile, detouring to Easter Island, the Atacama Desert or Patagonia, or simply seeing the sights of Santiago or Buenos Aires. Alternatively, the exquisite art and architecture of Moscow and St. Petersburg would make a memorable beginning or end to your Arctic journey.

ARCTIC RUSSIA

Russia's most northerly regions are its most intriguing and enticing. Whether you want to experience the thrill of dog sledging in the Russian Far East, to explore nature and wildlife, or learn about Arctic Russia's fascinating history, we would be happy to discuss ideas with you.

Solovetski Islands

Situated in the **White Sea**, 150km south of the Arctic Circle, the **Solovetski Islands** are one of the jewels of Russia. First settled by monks in the 1430s, the archipelago has six large and nearly 100 smaller islands, some of them covered by tundra and others with a groundcover of blueberry and crowberry. They abound with lakes, wildflowers and nesting birds and, in summer, beluga whales gather to calve in the shallow waters around the archipelago.

On the largest island, surrounded by enormous stone walls, stands the legendary 16th Century **Solvetski Monastery**. It has a fascinating history and in the 20th Century was one of the most feared and infamous prison camps, described by Solzhenitsyn in his book 'Gulag Archipelago'. Now that the monks have returned, it is possible to visit the beautiful cathedral, church, refectory and other buildings enclosed by the great 'kremlin' or fortification. There are over 170 architectural and

archaeological monuments on the islands, including 33 mysterious stone labyrinths dating back around 3,000 years. There is an unusual botanical garden and, in some places, using small boats and wooden rakes, men still collect seaweed to be made into local products. Accommodation here is simple – family-owned comfortable small hotels with delicious food. It's an excellent place in summer for walking, both along the coast and on the many small paths that lead inland. Your journey is by train from **St Petersburg** to **Kem** and then by boat across the **White Sea**.

Late winter provides a different perspective – for now the islands are surrounded by the frozen White Sea and the landscape is crisp and snowy. After a day in **Moscow**, travel by train to **Archangel** on the banks of the ice-bound **Dvina River**, through a snow-covered rolling landscape of farms and silver birch forest dotted with wooden churches and hamlets. From here fly to the **Solovetski Islands** and spend your days exploring using local transport and snow-shoes, which are provided. There are many tracks through the woods of 'dancing birches' leading to small lakes and the ice-bound coast and, conditions permitting, you may be able to walk out on the ice to offshore islands and visit the monks in their isolated cells. Enjoy fishing through the ice, evenings sitting around a wood fire and the tradition of the Russian banya, or steam bath. Cross-country skiing at a leisurely pace is also available.

» recommended time to visit « February for snow-shoeing and skiing and June for walking and boating around the islands
» ideal itinerary « 16 days
» price « Contact us for details and prices

DOG SLEDGING TRIPS

Early spring is a beautiful time of year in the Arctic, and travelling by dog-sledge is to experience its true spirit. The silence is only broken by the hiss of the sledge runners and the panting and padding of the dogs. We can suggest a number of perfect locations.

Arctic Norway – Drive your own dogs

Imagine the exhilaration of driving your own team of dogs. You stand on the runners of your sledge whilst the dogs take the strain. They are well-trained, very friendly and need no encouragement to trot all day. One of the delights is to get to know your own dog team and the trails of individual dogs. These expeditions in the mountains and high plateaux of **Northern Norway** have been organised and led by our Norwegian friends for over 14 years. After a day on the trail we may enjoy a sauna or sit in a hot tub with a chance to see the **Northern Lights** dance across the cloudless sky before relaxing around a log fire. Your hosts have a fund of stories about life in the north. They are excellent cooks and their menus feature the local products of reindeer and salmon.

In early spring the days are rapidly lengthening and the rays of the low sun in the early evening produce some beautiful colours on the snow-covered mountains. Snow and weather conditions permitting, you will make daily dog-sledge trips through beautiful snow-scape in **Dividalen** before returning each night to your cosy cabin.

» recommended time to visit « March/April
» price « Tailor made itineraries available.
Contact us for details and prices

Dog sledging in Kamchatka

In **Kamchatka**, towering snow-covered volcanoes dominate the tundra in a unique and spectacular scene of exquisite symmetry.

Here you have the special opportunity to meet some of the native peoples, including the **Koryaks**, **Eveni** and **Itelmen**, some of whom still maintain their traditional life herding reindeer. For centuries these people have used dog sledges in the wilderness. Travelling with them you will see many tracks in the snow which your dog-sledge drivers will be able to identify. Your hosts receive very few visitors so you will feel privileged to be guests of their communities and learn to appreciate ways of life very different from your own.

» recommended time to visit « February and March
» ideal itinerary « 16 days
» key info « You can either sit on the sledge and be driven by one of the dog handlers or drive the dog team yourself. This trip is only for the hardy as it can be extremely cold!
» price « Contact us for details and prices

VOYAGES – THE SHIPS

Almost the only way to explore the Arctic or Antarctic is to join a small group of people on an icebreaker or ice-strengthened expedition ship. While at sea you can view the dramatic frozen landscape from the comfort of the bridge or on deck and enjoy the passing scenery of magnificent mountains, glaciers and icebergs whilst scanning for dolphins, whales and birds. The ships can navigate fjords, passages and ice floes to visit seabird colonies and possibly find polar bears and walrus. Zodiac rigid inflatable boats are used to transfer us to the shore for excursions – they are guided by the ship's expedition staff and cater for all levels of fitness. There is also a comprehensive programme of lectures.



We work with almost all of the smaller ships currently operating in the Arctic and Antarctic and specialise in tailor-making holidays all over the world so, whilst the quoted prices include economy class air fares and any necessary arrangements to and from the voyage, we will be delighted to add on pre or post-tour arrangements as required.

» new for 2009 «

- » The icebreaker **Kapitan Khlebnikov** will this year transit the often ice-packed, and infrequently visited **Fury and Hecla Strait** off the west coast of **Baffin Island**.
- » The **Akademik Ioffe** now offers options for kayaking.
- » A new ship, **Plancius**, is operating educational voyages to Spitsbergen and East Greenland.



50 Years of Victory is a nuclear-powered polar-class icebreaker and the newest Arktika class icebreaker to be commissioned by the operator. She took 20 years to complete and is the largest fitted for passenger travel to the North Pole. The ship sails from her home port of Murmansk, Russia and has a steel ice belt five meters (18 feet) wide which enables her to crush through ice up to 2.5 meters (more than nine feet) thick.

- » accommodation « 128 passengers in 64 en-suite cabins of five categories, all with ocean views
- » itineraries « Arctic
- » operator « Quark



Akademik Ioffe is a comfortable, modern, ice-strengthened adventure vessel ideally suited for polar exploration. She has the feel of a cruise liner – albeit an ice-strengthened one. Registered at 6450 tons, her bow and stern thrusters provide maximum manoeuvrability, while a shallow draft enables passage through channels impassable by larger ships. There is a separate bar, lounge, library, video room, and dining space, gymnasium, sauna and swimming pool and she is equipped with zodiacs for ocean level exploration and kayaks for optional paddling among ice floes.

- » accommodation « 110 passengers
- » itineraries « Canadian Arctic and Spitsbergen
- » operator « Quark



Akademik Sergey Vavilov is equipped with zodiacs for ocean level exploration and kayaks for optional paddling among ice floes. She is powered by a 5,000 kW diesel twin engine. Bow and stern thrusters make her highly manoeuvrable, while a shallow draft permits passage through channels impassable by larger ships.

- » accommodation « 110 passengers
- » itineraries « Antarctic and Spitsbergen
- » operator « Quark



Akademik Shokalskiy, a former research vessel, is equipped to provide optional adventure activities such as camping and kayaking in the Arctic, while sailing in Svalbard and Eastern Greenland, in 2009.

- » accommodation « 48 passengers
- » itineraries « Antarctic and Spitsbergen
- » operator « Quark



Antarctic Dream is a Dutch-built ice-reinforced vessel which was originally a part of the Chilean Navy. She was rebuilt as an unrestricted, worldwide passenger vessel and completely refurbished in July 2005. She has a spacious dining room/observation lounge, bar, lecture room, fitness room plus sauna, boutique and passenger bridge.

- » accommodation « 84 passengers in twin cabins with private facilities, most with portholes or outside windows
- » itineraries « Spitsbergen and East Greenland
- » operator « **Oceanwide**



Clipper Adventurer is a reliable and comfortable expedition ship with well-appointed public spaces and covered outside promenades. This A-1 ice-class vessel was built in 1975 and underwent a US\$13 million renovation in 1998. Recent enhancements include the installation of a state-of-the-art Internet system offering guests onboard wireless connection.

- » accommodation « 122 passengers. All cabins have private facilities and outside views
- » itineraries « Antarctic
- » operator « **Quark**



Kapitan Khlebnikov is a diesel-powered icebreaker which has transited the Northwest Passage more often than any other passenger vessel. Powered by 24,000 horsepower engines, its advanced icebreaking technology takes you to regions where no other passenger vessel can sail. The ship is equipped with two helicopters and zodiacs for inland and shore landings. This means that despite Snow Hill Island in the Weddell Sea being surrounded by ten-tenths pack ice in October and November when the Emperor Penguins are still caring for their

young, you can make visits to the rookery thanks to the ship's ice-crushing power and onboard helicopters.

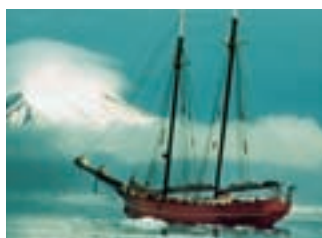
The ship's special guests this season will be Alexandra Shackleton during Epic Antarctica, a semi-circumnavigation that follows the Phantom Coast and cartoonist Adrian Raeside during the exploration of the Ross Sea.

- » accommodation « 108 passengers
- » itineraries « Canadian Arctic and Antarctic
- » operator « **Quark**



Lyubov Orlova is an expedition ship that provides softer adventures in a comfortable environment. Her public spaces were recently renovated and there are covered outside promenades for open-air viewing.

- » accommodation « 110 passengers
- » itineraries « Antarctic
- » operator « **Quark**



Noorderlicht was originally built in 1910 in Flensburg, Germany as a three-masted schooner and for most of her existence served as a light vessel on the Baltic. In 1991 the present owners purchased the hull and re-rigged and refitted her thoroughly as a two-masted schooner. For would-be sailors there is the option to help the crew of five to sail the vessel.

- » accommodation « 20 passengers in centrally-heated double cabins
- » itineraries « Spitsbergen and Lofoten Islands
- » operator « **Oceanwide**



Ocean Nova has clean, crisp Scandinavian styling and a reputation for being excellent for Antarctic exploration. Purpose-built to sail ice-choked waters, Ocean Nova's specially strengthened hull has enabled her to park in the ice of the Weddell Sea!

- » accommodation « 68 passengers
- » itineraries « Antarctic
- » operator « **Quark**



Plancius started her life in 1976 as an oceanographic research vessel for the Royal Dutch Navy and was purchased by the operator in 2006. She has been completely rebuilt and is now a comfortable and nicely decorated vessel highly suited to exploratory educational voyages where you spend as much time ashore as possible. Manned by 30 international crew members, she will fly the Dutch flag and complies with all the latest SOLAS regulations.

- » accommodation « 112 passengers. All cabins have private facilities in triple and twin formation
- » itineraries « Antarctic, Spitsbergen and East Greenland
- » operator « **Oceanwide**



Professor Molchanov has been chartered for at least 15 years for Arctic voyages. She was built in Finland in 1982 and has been refurbished and refitted.

- » accommodation « 52 passengers
- » itineraries « Scottish Islands, Faroes, Iceland, Jan Mayen Island, Spitsbergen and East Greenland, Antarctic
- » operator « **Oceanwide**



Professor Multanovskiy is the sister ship to Professor Molchanov. She too is a modern and comfortable ice-strengthened oceanographic research vessel.

- » accommodation « 52 passengers
- » itineraries « Scottish Islands, Faroes, Iceland, Jan Mayen Island, Spitsbergen and East Greenland, Antarctic
- » operator « **Oceanwide**

Many of the vessels shown here offer a variety of cabins. Our guide prices are based on twin cabins with shared or private facilities, but we will be happy to quote for single occupancy or superior cabins and suites (where available) on request.

In addition to voyages on ships operated by **Quark** and **Oceanwide** bookings may be also be arranged on smaller ships, travelling with **Polar Star**, **Peregrine**, **Aurora**, **One Ocean** and **Heritage** as well as diving expeditions with **Waterproof**. Please contact us for details of voyages, prices and availability.

VOYAGES – THE ARCTIC

The unimaginable majesty of the Arctic, a vast ice-encrusted ocean ringed by islands, casts a spell on all who visit. Many of our clients are drawn back time after time to visit different areas of the High Arctic. We offer a variety of voyages, some geared towards active exploration with walking, kayaking or skiing, others for those who want a more leisurely pace in comfortable vessels. Whichever you choose, the memories of this dramatic wilderness will stay with you always.

Several of our voyages are around Spitsbergen. Dutch for 'pointed mountains', this is an evocative name for the largest island of the Svalbard archipelago in the High Arctic, 1,300km from the North Pole. It has a fascinating history of arctic exploration and whaling. The scenery is dramatic – snowy peaks rise majestically through huge ice-caps, glaciers creep down valleys to the sea and sparkling ice walls enclose deep fjords. All this is surrounded by the glistening pack-ice as we walk along rocky shores. Although the archipelago is locked in ice for many months of the year, when summer comes it can be brilliant with orange lichens and flowering plants decorating the ground. The surrounding seas support numerous birds, seals, walruses, dolphins and whales. Polar bears (Svalbard holds more than 20 per cent of the world's population) patrol along the shores and on the ice-floes. Since the banning of hunting in the 1970s, the populations of bears and walruses have dramatically increased and you are almost certain to see these magnificent creatures on your voyage. Later in the season there will be shorter voyages in South Spitsbergen.

East Greenland is one of the most fascinating and remote areas of the High Arctic; it is one of the least visited places in the region since permission to land on the coast of the National Park is only given to very few operators. Our voyages to East Greenland cover the beautiful fjord system of Scoresby Sund and the scenically spectacular southeast coast. Since they take place towards the end of the Arctic summer when the East Greenland ice has receded, the autumn colours should brighten the tundra and there is an excellent possibility of seeing the Northern Lights.

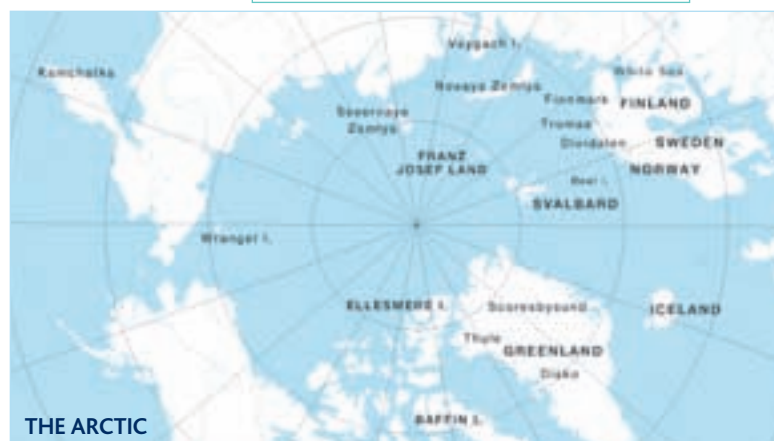
The descriptions in the following itineraries are a guideline only, since the routes taken and the landings made will be dependent on ice and weather conditions. We are happy to supply you with more detailed descriptions, including maps, photographs, day-by-day itineraries and reports of similar voyages in previous years on request.

» new for 2009 «

» The arrival of the new ship **Plancius** will bring back memories for some. Operating for Oceanwide in the Arctic in 2009, Plancius bears the name of the smaller ship operated in earlier days of tourism in Svalbard.

Key to optional extras (opt. extras)

- ▲ camping
- walking expeditions
- scuba diving option
- ◆ kayak option
- ▲ mountaineering
- * cross country skiing



CANADIAN AND HIGH ARCTIC

High Arctic Explorer – Baffin & Greenland

This voyage offers the opportunity to combine some of the richest wildlife areas in the High Arctic with spectacular scenery and visits to two of the few communities maintaining a traditional way of life. For the more energetic, there is the possibility of kayaking at an additional cost when the conditions are right. In 2009 we plan to visit **Prince Leopold Island** where you may see walrus and polar bears if the pack ice is close. Continue to **Devon Island** and **Coburg Islands** where we will cruise in zodiacs

along the cliffs and sail across **Melville Basin**, known to be the habitat of the bowhead whale.

In Greenland we plan to visit **Qaanaaq** and **Cape York** where ice and weather conditions combine to create a friendly environment for narwhal and seals. Heading south and west we cross **Baffin Bay** for **Pond Inlet** before continuing to **Cape Hay**, breeding grounds for murre, guillemots and kittiwakes. The voyage ends with Devon Island and **Beechey Island**.

» ship « **Akademik Ioffe**
» dates « 1 - 16 August 2009
12 - 27 August 2009
» travel from « London – London (embark in Resolute)
» optional extras « ♦
» guide price « **£5,550** per person based on twin cabin (shared facilities)

Heart of the Northwest Passage

During this 15-day active adventure through the heart of the **Northwest Passage**, you will visit the islands and waterways that are synonymous with the legendary search for the northern seafaring route to Asia. In **Peel Sound** we will stand watch for whales. Having paid our respects at **Beechey Island** to the crew of Franklin's tragic expedition which ended in 1859 we continue westwards through the **Bellot Strait** to **King William Island**. We hope to follow polar bears through the ice as they track

ringed seals. We will cross into the second of **Canada's** three Arctic Territories, the **Northwest Territories** and finally to the **Amundsen Gulf** for the homeward journey ending at **Cambridge Bay** for the flight to **Edmonton** and on home. En route from **Resolute** to Cambridge Bay, there is the option to do some kayaking.

Please note that the second departure of this expedition is operated in reverse and is of shorter duration.

» ship « **Akademik Ioffe**
» dates « 23 August - 8 September 2009
5-19 September 2009
» travel from « London – London (embark in Resolute)
» optional extras « ♦
» guide price « **£5,595** per person based on twin cabin (shared facilities)



Northwest Passage: The fabled transit

During this 19-day icebreaker transit of the Northwest Passage, we sail from **Asia** to the **Canadian Arctic**. We will explore the **Chukotka Peninsula** in Russia's Far East before sailing across the **Beaufort Sea** to the Canadian Arctic. Landings are planned in locations made famous by Roald Amundsen and infamous by Sir John Franklin's tragic expedition in search of the fabled passage to Asia.

» ship « **Kapitan Khlebnikov**
» dates « 17 July - 6 August 2009
» travel from « London – London (embark in Anadyr)
» guide price « **£13,490** per person based on twin cabin (private facilities)

Tanquary Fjord – Ellesmere Island

This 16-day icebreaker expedition sails north from **Resolute** to the high latitudes of the western shore of **Ellesmere Island**. Landings are intended on **Ellesmere Island**, **Devon Island** and in **Tanquary Fjord** with aerial-sightseeing planned over **Axel Heiberg Island** and the **Belcher Channel**.

This voyage will take you to the stunning glaciers and valleys of Tanquary Fjord, the petrified

forests of **Axel Heiberg Island**, and some of the most remote communities in the world. Polar bears, musk oxen, Arctic hares, seals, whales and walrus inhabit this icy paradise. It is also an area rich in the history of Arctic exploration. The final landing is on **Beechey Island** to view the Franklin Memorial. You can feel history surround you on this desolate coast where Franklin and his men wintered in 1846-7 before disappearing.

» ship « **Kapitan Khlebnikov**
» dates « 3 - 19 August 2009
» travel from « London – London (embark in Resolute)
» guide price « **£11,745** per person based on twin cabin (private facilities)



North of 80 degrees – Greenland & Canada

The pristine east coast of **Ellesmere Island** is virtually unexplored and is the highlight of this Arctic adventure. We shall visit the remote sea cliffs of Greenland's western fjords to observe thousands of seabirds as well as the historic and archaeological sites of northeast Ellesmere Island. From **Resolute** we will follow the route of the 19th century explorers into **Lancaster Sound** and sail on through **Baffin Bay** to Greenland. This year for the first time we hope to navigate as

far into **Robeson Channel** and the **Lincoln Sea** as conditions permit. On Ellesmere Island we plan to land at **Fort Conger** and explore **Buchanan Bay**, **Alexandra Fjord**, and **Skraeling Island**. A landing is planned on **Pim Island** and **Starvation Camp** where many of Adolphus Greely's expedition of 1881-84 struggled ashore and died. We cruise by zodiac the base of towering cliffs at **Coburg Island** before disembarking at Resolute for the flight back to Ottawa and home.

» ship « **Kapitan Khlebnikov**
» dates « 16 - 30 August 2009
» travel from « London – London (gateway Ottawa, embark in Resolute)
» guide price « £10,115 per person based on twin cabin (private facilities)

The North Pole

From **Murmansk** we cross the **Barents Sea** towards the relatively unexplored archipelago of **Franz Josef Land**, which was only discovered in the late 1800s. Shore landings are planned here and at 90°N, the top of the world. On Franz Josef Land's stunning flat-topped islands you will encounter fascinating Arctic wildlife in its spectacular setting of snow and ice. Polar bears, walrus, arctic fox, seals and belugas all inhabit

the region. Stand on the **North Pole** and enjoy a hike on the expansive ice before continuing to Franz Josef Land, keeping a watchful eye for polar bears en route. Sightseeing by helicopter gives you an aerial view of the ship crushing its way through the formidable Arctic Ocean pack ice and is an unforgettable sight on this most memorable of journeys.

» ship « **50 years of Victory**
» dates « 9 - 24 July 2009
22 July - 6 August 2009
4 - 19 August 2009
» travel from « London – London (gateway Helsinki, embark in Murmansk)
» guide price « £13,650 per person based on twin cabin (private facilities)



Fury and Hecla: stories of exploration

During this 16-day Canadian Arctic expedition you'll transit the legendary **Hecla and Fury Strait**. Named after a pair of exploration ships that were forced to turn back when they reached the ice-choked channel, this body of water on the west coast of **Baffin Island** continues to thwart ordinary vessels.

» ship « **Kapitan Khlebnikov**
» dates « 27 August - 12 September 2009
» travel from « London – London (gateway Ottawa, embark Resolute, disembark Iqaluit)
» guide price « £11,745 per person based on twin cabin (private facilities)

ARCTIC NORWAY: SPITSBERGEN

Sail & snow-shoe North Spitsbergen

Embarking at **Longyearbyen**, Spitsbergen's administrative capital, we sail through scenic **Isfjorden**, setting a course for **Alkhorneret** at the mouth of the fjord whose cliffs are home to a large colony of kittiwakes. We continue to **Trygghamna** to visit the remains of a 17th century English whaling station. Weather permitting we will go ashore at **Fuglehuken**, where the expedition of Willem Barentsz landed on Spitsbergen and **Ny Alesund**, the northernmost permanent settlement in the world and former starting point for many North Pole expeditions. Local bird life includes barnacle geese, pink-footed geese, common eiders, arctic terns and several wader species. Reindeer can also be seen in the vicinity. Sailing from here to **14th July Glacier** we take zodiacs to the breeding site for Brunnich's guillemots, little auks and puffins. Sailing north we visit **Magdalenafjord**, one of the most beautiful places in Spitsbergen, and **Ytre Norskøya** which was used as a lookout point for Dutch whalers. **Raudfjord** on the north coast offers good chances for spotting polar bears and belugas and, if sea-ice conditions allow, we may land on the northern side of **Reindyrflya** whose undulating tundra provides good grazing for reindeer. Our last visit before turning south is

the remains of **Smeerenburg**, the largest 17th century whaling settlement on Spitsbergen. If we are able to make land on the return journey, there is the option for fit walkers to take the six-hour walk from **Colesbukta** to Longyearbyen.

» ship « **Noorderlicht**
» dates « 18 - 30 May 2009
» travel from « London – London (gateway Oslo, embark in Longyearbyen)
» guide price « £2,745 per person based on twin cabin (shared facilities)



Sail North Spitsbergen

From **Spitsbergen** we follow the 'Sail & snow-shoe north Spitsbergen' itinerary. Already the short summer has transformed the tundra which is now brilliant with orange lichens and flowers. There are more than 170 species of plants and the vegetation is surprisingly lush, especially below the bird cliffs where the ground is fertilised. This is also the time when migrating birds have returned to breed. The small Svalbard reindeer, arctic foxes and polar bears may be sighted on the tundra whilst walrus, several species of seals and fin, humpback, bowhead and beluga whales may be seen in the waters.

- » ship « **Noorderlicht**
- » dates « 29 May - 10 June 2009
9 - 21 June 2009
20 June - 2 July 2009
1 - 13 July 2009
10 - 22 September 2009
- » travel from « London – London (embark in Longyearbyen)
- » guide price « **£2,745** per person based on twin cabin (shared facilities)



Sail around Spitsbergen

This 17-day itinerary aims to complete the voyage right around **Spitsbergen**. Later in the summer when the ice has cleared we are able to sail through the **Hinlopen Strait** and visit **Nordautlandet** and **Edgeøya**. This route provides the greatest chance of seeing Greenland whales.

- » ship « **Noorderlicht**
- » dates « 12 - 28 July 2009
27 July - 12 August 2009
11 - 27 August 2009
26 August - 11 September 2009
- » travel from « London – London (embark in Longyearbyen)
- » guide price « **£3,445** per person based on twin cabin (shared facilities)

Sail South Spitsbergen

This journey covers the southern part of **Spitsbergen** in late September, just before the onset of winter, which is an ideal time for observing the splendid Aurora Borealis. Leaving Spitsbergen we set a course for **Alkhorneret** at the mouth of the fjord whose cliffs are home to a large colony of kittiwakes. We continue to **Trygghamna** to visit the remains of a 17th century English whaling station before turning south and into the north side of **Bellsund**, where we make a walk to the cliffs of **Ingeborgfjellet**

and visit a glacier front at **Fridtjofhamna**. Journeying further south, we sail into the labyrinth of side fjords in **Hornsund** with good chances of seeing bearded seals and polar bears. Here we will also find spectacularly colourful geological formations. We will visit a Polish research station to discuss their scientific programmes before turning north once more. During nights with open skies we could experience temperatures of -10°C and new ice will be forming on the heads of the fjords.

- » ship « **Noorderlicht**
- » dates « 21 - 29 September 2009
- » travel from « London – London (embark in Longyearbyen)
- » guide price « **£1,945** per person based on twin cabin (shared facilities)

Sail Lofoten Islands

The **Lofoten** voyages take place in the autumn, when the days are getting short in northern Norway but the colours are beautiful in the daytime. We can expect the first snow showers, and temperatures are sometimes just above freezing. At night, we may be able to admire the Aurora Borealis. Embarking in the harbour at **Lodingen** we spend two full days in the **Tysfjord** area looking for groups of Orcas (killer whales) which hunt in these fjords for herring and

looking at petroglyphs from the Stone Age depicting orcas at **Leiknes**. We will sail into **Vestfjord**, another good area for observing whales and then visit **Kabelvaag**, a cosy historical town before working our way back through **Vestfjorden** to disembark. The Lofoten voyages are very dependent on the weather, which can be quite rough so the itinerary is provisional. The best time to see orcas is during the second half of October and in November.

- » ship « **Noorderlicht**
- » dates « 10 - 17 November 2009
17 - 24 November 2009
24 November - 1 December 2009
1 - 8 December 2009
8 - 15 December 2009
- » travel from « London – London (embark in Lodingen)
- » guide price « **£1,440** per person based on twin cabin (shared facilities)



ARCTIC NORWAY: SPITSBERGEN AND NORTH EAST GREENLAND

North East Greenland & Spitsbergen

These adventurous voyages provide a rare opportunity to see the remote north-east coast of **Greenland** and compare and contrast its spectacular scenery, enormous ice-cap and majestic mountains with that of **Spitsbergen**. To visit these areas in the past required a camping and trekking expedition. Now you can experience the remarkable Arctic landscape from the comfort of a ship with expeditions ashore to visit Inuit sites, hunters' huts and see the plants, birds and mammals. On clear nights we might be able to see the Aurora Borealis.

At this time of year the pack-ice has retreated northwards and we aim to sail round the north coast of Spitsbergen, much of which is a nature reserve. This will provide opportunities to see walruses, polar bears and rare ivory gulls.

Between the high ice-cap of North-East Greenland and the sea, there is a broad strip of low country that is free of snow in summer and covered in places with rich vegetation that supports many

animals, from muskoxen to butterflies. The weather is usually calm and fine in what has been called the 'Arctic Riviera'. This is also the area where the Sledge Patrol played out its game of hide-and-seek during World II. Some of the people of **Ittoqqortoormiit**, the main settlement in the region, still make a living hunting polar bears, muskoxen, seals, whales and seabirds. Crossing from north west Spitsbergen we keep

watch for fin, humpback and minke whales and approach East Greenland where we make our first landing at **Myggebugten**. We hope to encounter narwhal and should see muskoxen from the ship. Moving south to **Scoresby Sund** we land near a glacier and encounter huge icebergs before continuing with many highlights en route to **Ittoqqortoormiit**, disembarking finally in **Akureyri** in north Iceland for the journey home.

» ships «	» dates «	» cabins «	» guide price «	» opt. extras «
Antarctic Dream	24 August - 6 Sept 2009	Twin cabin (private facilities)	£5,180	
Plancius	26 August - 8 Sept 2009	Twin cabin (private facilities)	£5,180	◆
Professor Molchanov	4 - 17 Sept 2009	Twin cabin (shared facilities)	£3,990	

» travel from « London – London (embark in Longyearbyen)
» notes « Prices per person based on twin cabin

Scoresby Sund

Early autumn is the best time to explore the coast of East Greenland as the ice floes have usually dispersed and it is possible to enter the fjords. This is a voyage to a seldom-visited part of the coast. The days are still long, but temperatures can drop below freezing and the scenery of stark ice contrasts with rich autumnal colours on the tundra. We visit a modern settlement and witness traditional Greenlandic culture. We should see birds moving south on migration, muskoxen, seals and possibly narwhals. On clear nights we may see the Aurora Borealis or Northern lights.

» ships «	» dates «	» cabins «	» guide price «	» opt. extras «
Professor Molchanov	16 - 26 Sept 2009	Twin cabin (shared facilities)	£3,750	
Antarctic Dream	5 - 15 Sept 2009	Twin cabin (private facilities)	£3,750	
Plancius	7 - 17 Sept 2009	Twin cabin (private facilities)	£4,325	

» travel from « London – London (embark in Akureyri)
» notes « Prices per person based on twin cabin. The 16 - 26 September itinerary on board Professor Molchanov is a 'photography voyage' for those keen to capture wildlife and scenery on camera

North Spitsbergen

Our voyage heads north along the west coast of **Spitsbergen** and arrives by morning in **Krossfjorden** where we take to the zodiacs for an exhilarating cruise along the sculpted front of the **14th of July Glacier** to spot kittiwakes and Brünnich's guillemots, bearded seals and arctic foxes. Continuing, we sail to **Ny Ålesund**, the world's most northerly settlement, once a mining village and now a research centre. Close to the village is a breeding ground for barnacle geese, pink-

footed geese and arctic terns. Visitors interested in the history of Arctic exploration will want to walk to the anchoring mast used by Amundsen and Nobile in the airship Italia in 1926 and Nobile in the airship Italia in 1928 before their flights to the North Pole. Depending on the weather we may go ashore on the tundra island of **Andøya** where many common eiders and pink-footed geese nest and sail into **Liefdefjorden**, cruising near the 5km long face of the impressive **Monaco**

Glacier. Our voyage continues into **Hinlopen Strait**, where, on the east side, we will attempt a landing at **Nordautlandet**, home to reindeer, pink-footed geese, breeding ivory gulls, and walruses. Our northernmost point will be **Phippsøya** at 81 degrees north, just 540 miles from the geographic North Pole. Polar bears inhabit this region, along with ivory gulls. We may sit for several hours in the pack ice, taking in our spectacular surroundings and seeing a Ross gull, before we turn south again.

» ships «	» dates «	» cabins «	» guide price «	» opt. extras «
Professor Multanovskiy	19 - 27 June 2009	twin cabin (shared facilities)	£2,955	
Antarctic Dream	11 - 19 June 2009 18 - 26 June 2009	twin cabin (private facilities)	£2,955	
Plancius	20 - 28 June 2009	twin cabin (private facilities)	£3,495	●

» travel from « London – London (embark Longyearbyen)
» notes « Prices per person based on twin cabin



Around Spitsbergen

This itinerary covers the same early days as the North Spitsbergen voyage. From **Phippsøya**, however, we then continue to **Laagøya**, a low island where a big herd of walrus tends to congregate. Heading into **Hinlopen Strait** we'll navigate the ice floes of **Lomfjordshalvøya** by zodiacs and explore the bird cliffs. Near **Torrelneset** we will explore the polar desert of **Nordautlandet** next to the world's third largest ice cap and in **Freemansundet** we plan to land at **Sundneset** on the island of **Barentsøya** to visit an old trapper's hut. Later we head south to the west side of **Edgeøya** where we land on a beach littered with whale bones and tree trunks which have drifted here from Siberia. Our voyage ends with the side fjords of the spectacular **Hornsund** area of southern Spitsbergen with its towering peaks. Our last landing is on **Ahlstrandhalvøya** where piles of beluga skeletons, the remains of 19th century slaughter are still evident. If ice conditions are favourable we may sail around Nordautlandet visiting **Kvitøya**, the place where the Swedish explorer Andree perished, instead of sailing back through the Hinlopen Strait.

» ships «	» dates «	» cabins «	» guide price «	» opt. extras «
Professor Molchanov	4 - 15 July 2009 14 - 25 July 2009 24 July - 4 August 2009 3 - 14 August 2009 13 - 24 August 2009	Twin cabin (shared facilities)	£3,995	
Professor Multanovskiy	26 June - 7 July 2009 6 - 17 July 2009 16 - 27 July 2009 26 July - 6 August 2009 5 - 16 August 2009	Twin cabin (shared facilities)	£3,995	
Antarctic Dream	25 June - 6 July 2009 5 - 16 July 2009 15 - 26 July 2009 25 July - 5 August 2009 4 - 15 August 2009 14 - 25 August 2009	Twin cabin (private facilities)	£3,995	●
Plancius	27 June - 8 July 2009 7 - 18 July 2009 17 - 28 July 2009 27 July - 7 August 2009 6 - 17 August 2009 16 - 27 August 2009	Twin cabin (private facilities)	£4,650	◆◆◆◆◆

» travel from « London – London (embarking Longyearbyen)
» notes « Prices per person based on twin cabin

SCOTTISH ISLANDS AND ARCTIC NORWAY

Jan Mayen is a volcanic island set in the north Atlantic Ocean, half-way between Iceland and Spitsbergen. It is named after Jan Jacobsz May, a Dutch whaler who landed here in 1614 (though the island had been seen before) and was a major whaling centre for both Dutch and English whalers. The still-active volcano, **Beerenberg**, is 2,200m high and dominates the island. The first impression the visitor gets is of a rough, inhospitable landscape, studded with snowfields, the sides of Beerenberg swept by glaciers and separated by steep, rocky faces. The weather is unpredictable: there may be heavy rain, wind and fog but then, soon after, the sun may break through and the sky clears. During the winter Jan Mayen is often surrounded by pack-ice and Beerenberg's slopes are perpetually snow-covered. When whaling ceased, the difficult access and poor

climate limited human activities: Norway established a weather station there, finally claiming sovereignty in 1929. During World War II Jan Mayen was of great symbolic importance as the last piece of 'free Norway'.

Vegetation is scarce, limited to just a few mosses, grasses and a scattering of flowering plants, yet for all its ruggedness and inhospitable climate the island has a wild beauty. Pebble beaches alternate with dazzling high rock faces and you can still see the old bleached bones of whales and the remains of the whaling stations on the beaches. The rock faces are home to breeding colonies of glaucous gull, northern fulmars, kittiwakes, little auks, black guillemots and Brünnich's guillemots and puffins, whilst common eiders, arctic terns, ringed plovers nest on the flat land behind the beaches.



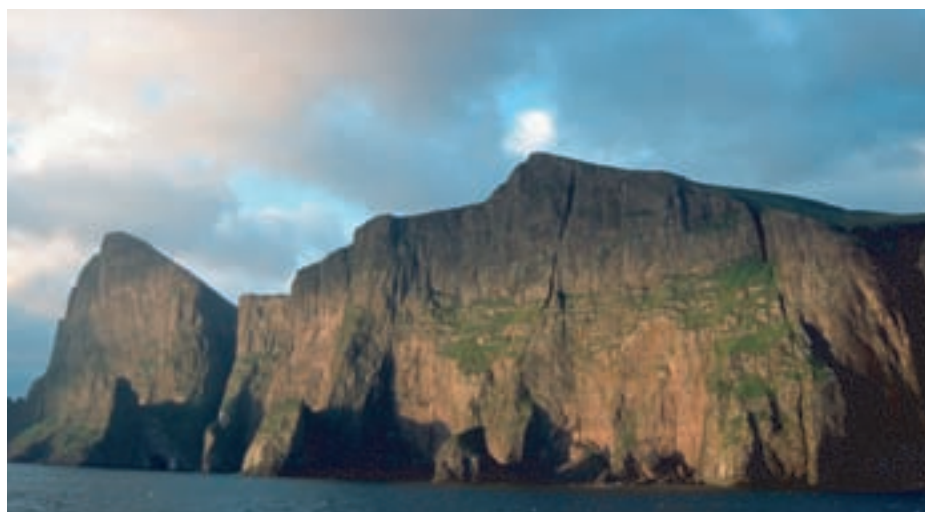
St Kilda – Jan Mayen

» ship « **Professor Multanovskiy**
» dates « 11 - 20 June 2009
» travel from « Oban – London (embark Oban)
» guide price « **£2,445** per person based on twin cabin (shared facilities)

Faroes, Jan Mayen, Bear Island, Spitsbergen

This voyage starts in Oban and journeys to the **Faroes, Jan Mayen and Bear Island** (situated half way between Norway and Spitsbergen) before travelling north to **Longyearbyen**.

» ship « **Professor Molchanov**
» dates « 12 - 23 June 2009
» travel from « Oban – London (embark Oban)
» guide price « **£2,930** per person based on twin cabin (shared facilities)



VOYAGES – THE ANTARCTIC

The Antarctic, particularly the Peninsula or 'White Continent' has an incomparable and irresistible beauty – this magical frozen land with its awe-inspiring glaciers and rich diversity of bird and wildlife resonates with the history of intrepid explorers and epic struggles for survival. We offer a range of voyages on icebreakers and expedition ships that is continually changing, so if you cannot find exactly what you want on the following pages do contact us. We will be happy to make suggestions on places and optional activities to suit your own requirements.

Most of our voyages depart from Ushuaia at the southern tip of South America and cross the Drake Passage, spending several days visiting the South Shetland Islands and the Antarctic Peninsula. The peninsula is a spectacular chain of mountains and glaciers and is the richest part of Antarctica for wildlife. The waters are sheltered by islands which makes for comfortable sailing and easy landings. Some of these voyages also visit South Georgia and the Falkland Islands.

South Georgia is a 100-mile long island with mountains and glaciers that equal the grandeur of Antarctica. There is also a green fringe of vegetation that supports a greater variety of wildlife, including the magnificent king penguin and wandering albatross, many smaller birds such as the endemic pintail and pipit, as well as colonies teeming with fur seals. For those interested in its history, many voyages visit the scene of Shackleton's epic crossing of the island.

The Falkland Islands are different again: an archipelago of large and small islands with an even more varied wildlife and relaxed lifestyle among the human inhabitants. More adventurous voyages head for the Ross Sea, sometimes called 'The Far Side of Antarctica' – on an icebreaker to visit emperor penguin colonies and Scott's and Shackleton's huts. Because some of the vessels are comparatively small, early booking is recommended.

The descriptions in the following itineraries are a guideline only, since the routes taken and the landings made will be dependent on ice and weather conditions. We are happy to supply you with more detailed descriptions, including maps, photographs, day-by-day itineraries and reports of similar voyages in previous years on request.



» new for 2009 «

- » 'Unknown Antarctica' sailing with **Professor Molchanov and Plancius**: Two voyages will take in sites such as Anvers, Bluff, Brabant and Trinity Islands in December 2009, with a final voyage on Plancius which will cross the polar circle and create the opportunity to participate in a true expedition voyage.
- » The opportunity to visit both emperor and king penguins on board **Kapitan Khlebnikov**. It is an ideal 'graduating' departure for past passengers who have previously visited the Peninsula only.

Key to optional extras (opt. extras)

- ▲ camping
- walking expeditions
- scuba diving option
- ◆ kayak option
- ▲ mountaineering
- * cross country skiing

FALKLANDS, WEDDELL SEA AND ANTARCTIC PENINSULA

Classic Antarctic Peninsula

These voyages offer the best introduction to the **White Continent** and concentrate on seeing as much as possible of the wildlife and scenery of the **Antarctic Peninsula** and **South Shetland Islands**. Embark in **Ushuaia** and sail across the **Drake Passage** and into sheltered waters.

Four or five days are spent in Antarctica, starting with landings planned at the abandoned whaling station on **Deception Island** and the chinstrap penguin colony of **Orne Island**. These are followed by visits to **Cuerville Island** and **Paradise Bay** where there is a good chance you will see large whales. Sailing through the **Lemaire Channel** to **Petermann and Pleneau Island** takes you through the spectacular scenery with a good chance of seeing adeli penguins and elephant seals. The return voyage is through the **Gerlache Strait**, home to leopard seals and blue-eyed shags, followed by a visit to an Argentine research station. Landings are usually



made twice a day so that all species of penguins, seals and other wildlife will be seen; some landings visit historic sites and operational bases while zodiac cruises offer an exciting alternative to landings.



» ships «	» dates «	» cabins «	» guide price «	» opt. extras «
Professor Molchanov	21 Jan - 3 Feb 2010 31 Jan - 13 Feb 2010 21 March - 3 April 2010	Twin cabin (shared facilities)	£5,370	●
Professor Multanovskiy	17 Nov - 1 Dec 2009 2 - 15 Feb 2010 12 - 25 Feb 2010 22 Feb - 7 March 2010 26 March - 8 April 2010	Twin cabin (shared facilities)	£5,370	◆ ● ●
Plancius	24 Jan - 6 Feb 2010 21 Feb - 8 March 2010 5 - 18 March 2010	Twin cabin (private facilities)	£6,095	

» travel from «	All travel is from London – London (embark in Ushuaia)
» notes «	Guide prices per person based on twin cabin and vary according to departure date ● there is a supplement per diver which includes tanks and weights ● daily long hikes of approx 4-6 hours ◆ there is a supplement per kayaker which includes wetsuit

Weddell Sea, in search of the Emperor Penguin

This voyage provides the best opportunity to see emperor penguins without courting bankruptcy. The ship will pass close to **Snow Hill Island** and provide an ideal opportunity to observe penguins at the ice edge followed by landings at the site of the **Nordenskiöld expedition**.



» ships «	» dates «	» cabins «	» guide price «	» opt. extras «
Professor Molchanov	21 Nov - 4 Dec 2009	Twin cabin (shared facilities)	£5,535	
Professor Multanovskiy	22 Jan - 5 Feb 2010	Twin cabin (shared facilities)	£6,530	

» travel from «	All travel is from London – London (embark in Ushuaia)
» notes «	Guide prices per person based on twin cabin and vary according to departure date

Falklands – South Georgia – Antarctic Peninsula

These longer voyages visit the **Falkland Islands** where they call at **New Island** and **Port Stanley**. Leaving Stanley, they cross to **South Georgia** encountering a great number of seabirds as they cross the **Convergence**. Three days are spent in South Georgia visiting historic sites encountering fur and elephant seals, albatrosses and petrels. They then cross to the **Antarctic Peninsula** via **Laurie Island** in the **South Orkneys** visiting adeli penguin colonies at **Punta Cormoran**. Three days are spent around the Peninsula including sailing through the beautiful **Gerlache Strait** and, if weather permits, landing on the continent itself at **Portal Point**. The return trip to Ushuaia is marked by the profusion of seabirds following the ship.

» ships «	» dates «	» embark in «	» cabins «	» guide price «
Professor Molchanov	5 - 24 Nov 2009 3 - 24 Jan 2010	Port Stanley Ushuaia	Twin cabin (shared facilities)	£7,645 £9,550
Professor Multanovskiy	1 - 20 Nov 2009 17 Dec - 7 Jan 2010	Port Stanley Ushuaia	Twin cabin (shared facilities)	£7,645 £9,550
Plancius	31 Oct - 22 Nov 2009 19 Nov - 10 Dec 2009 19 Dec 2009 - 9 Jan 2010 6 - 27 Jan 2010 3 - 24 Feb 2010	Puerto Madryn Ushuaia Ushuaia Ushuaia Ushuaia	Twin cabin (private facilities)	£9,295 £9,550 £9,550 £9,550 £9,550

» travel from «	All travel is London – London
» notes «	Guide prices per person based on twin cabin and vary according to departure date

Antarctic Peninsula: Classic Antarctica in large ships

Voyages in these larger ships (maximum 122 passengers) are the most economical way to visit the **Antarctic Peninsula** whilst still enjoying a fairly intimate experience. Embark in **Ushuaia** before crossing the **Drake Passage** to spend five days around the western side of the Peninsula including the **Lemaire Channel**.

» **travel from** « All travel is London – London with embarkation in Ushuaia
 » **notes** « Itineraries, prices and availability vary throughout the season so do contact us for more information

» ships «	» dates «	» cabins «	» guide price «	» opt. extras «
Lyubov Orlova	9 - 22 Nov 2009 19 Nov - 2 Dec 2009 29 Nov - 12 Dec 2009 9 - 21 Dec 2009 5 - 17 Jan 2010 14 - 26 Jan 2010 10 - 22 Feb 2010 19 Feb - 4 March 2010 1 - 14 March 2010	Twin cabin (lower deck/private facilities)	£4,245	
Clipper Adventurer	3 - 16 Nov 2009 18 - 30 Dec 2009 14 - 26 Jan 2010 23 Jan - 4 Feb 2010 1 - 13 Feb 2010 10 - 23 Feb 2010	Twin cabin (lower deck/private facilities)	£4,975	

Weddell Sea: Emperor Penguins & Snow Hill Island

From **Ushuaia** we cross the **Drake Passage** and continue into the pack ice of the **Weddell Sea** to land by helicopter and explore the Emperor Penguin colony situated on frozen sea near **Snow Hill Island**. A degree of flexibility is important – in 2007, visitors to the rookery saw emperor chicks, many sitting on the feet of the adult caring for them and we hope to

repeat this unique opportunity in 2009. We visit adelie, chinstrap and gentoo penguin colonies on the Antarctic Peninsula and navigate through the **Antarctic Sound** at the northern tip of the Peninsula – the exact route will be determined by local weather conditions but the plan is to sail **Iceberg Alley**.

» **ship** « **Kapitan Khlebnikov**
 » **dates** « 9 - 24 October 2009
21 October - 5 November 2009
2 - 17 November 2009
 » **travel from** « London – London (embark in Ushuaia)
 » **guide price** « **£11,035** per person based on twin cabin (private facilities)

Emperors & Kings: Snow Hill and South Georgia penguin safari

Embarkation is **Ushuaia** and disembarkation is in **Stanley**, Falkland Islands. From here you fly to **Santiago**, Chile where you overnight before flying home. This icebreaker expedition offers a rare chance to see emperor and king penguins during the same voyage. It is an ideal

'graduating' departure for past passengers who have only visited the Peninsula. Conservationist and internationally-renowned wildlife artist Robert Bateman and his wife will be joining us as the special guests aboard.

» **ship** « **Kapitan Khlebnikov**
 » **dates** « 14 November - 7 December 2009
 » **travel from** « London – London (embark in Ushuaia)
 » **guide price** « **£17,115** per person based on twin cabin (private facilities)

Actively exploring the Peninsula

These voyages offer the opportunity to not only see the landscape and wildlife of the area but also to walk, kayak and camp during the five days that the ship spends in the Antarctic Peninsula. The itinerary varies with weather and the seasons and we advise that you contact us before selecting your voyage.



» ships «	» dates «	» cabins «	» guide price «	» opt. extras «
Akademik Shokalskiy	20 Nov - 3 Dec 2009 18 - 31 Dec 2009 10 - 23 Jan 2010 7 - 20 Feb 2010 17 Feb - 2 March 2010 27 Feb - 12 March 2010	Twin cabin (shared facilities)	£4,735	◆ ▲ ◆ ▲ ◆ ▲ ◆ ▲ ◆ ▲ ◆ ▲
Akademik Sergey Vavilov	31 Oct - 13 Nov 2009 10 - 23 Nov 2009 26 Dec - 8 Jan 2010 18 - 31 Jan 2010 28 Feb - 13 March 2010	Twin cabin (shared facilities)	£4,495	◆ ▲ ◆ ▲ ◆ ▲ ◆ ▲ ◆ ▲ ◆ ▲
Ocean Nova	19 Nov - 2 Dec 2009 29 Nov - 12 Dec 2009 9 - 22 Dec 2009 19 Dec 2009 - 1 Jan 2010 29 Dec 2009 - 11 Jan 2010	Twin cabin (private facilities)	£5,495	◆ ▲ ◆ ◆ ◆ ▲ ◆ ◆ ◆ ▲ ◆ ◆ ◆ ▲ ◆ ◆ ◆ ▲ ◆ ◆ ◆ ▲ ◆ ◆

» **travel from** « All trips are London – London (embark in Ushuaia)
 » **notes** « Guide prices per person based on twin cabin. Itineraries, prices and availability vary throughout the season so do contact us for more information

Antarctic Quest: Falklands, South Georgia and the Peninsula

This 20-day expedition is for people who are always on the move. It offers an average of three activities off the ship per day while in the **Falkland Islands, South Georgia and the Antarctic Peninsula**. The education program introduces you to the flora and fauna of each region. Optional adventures are available on selected departures.



» ships «	» dates «	» cabins «	» guide price «	» opt. extras «
Akademik Shokalskiy	2 - 23 Nov 2009 30 Nov - 21 Dec 2009 20 Jan - 10 Feb 2010	Twin cabin (shared facilities)	£7,450	◆ ◆ ◆
Akademik Sergey Vavilov	20 Nov - 11 Dec 2009 8 - 29 Dec 2009 28 Jan - 18 Feb 2010	Twin cabin (shared facilities)	£7,070	◆ ◆ ◆
Ocean Nova	1 - 22 Nov 2009 21 Jan - 11 Feb 2010 20 Feb - 14 March 2010	Twin cabin (private facilities)	£8,865	◆ ▲ * ◆ ◆

» travel from « London – London (embark in Ushuaia)
 » notes « Guide prices per based on twin cabin and vary throughout the season so do contact us for more information

Explorers' route via Falklands and South Georgia

These longer voyages on the more comfortable expedition ships embark in **Ushuaia** and sail to the **Falkland Islands** where they call at **New Island** and **Port Stanley**. Leaving Stanley, they cross to South Georgia encountering a great number of seabirds as they cross the Convergence. On landing in **Grytviken**, South Georgia, history will be in your mind as the area is synonymous with Sir Ernest Shackleton's rescue of the crew of *Endurance*. Several days are spent in **South Georgia** visiting historic sites and encountering fur and elephant seals, albatrosses and petrels. They then cross to the **Antarctic Peninsula** via the **South Shetland Islands** where the expedition team will attempt an average of two landings a day to visit an active research station and walk with penguins

at a rookery. Continue to the Peninsula where you will hopefully land on the continent itself in the footsteps of the brave and determined

explorers that have preceded you. The return trip is marked by the profusion of seabirds following the ship.

» ships «	» dates «	» cabins «	» guide price «	» opt. extras «
Lyubov Orlova	18 Dec 2009 - 8 Jan 2010 23 Jan - 13 Feb 2010	Twin cabin (lower deck/ private facilities)	£8,535	
Clipper Adventurer	30 Nov - 21 Dec 2009 26 Dec 2009 - 17 Jan 2010 20 Feb - 13 March 2010	Twin cabin (lower deck/ private facilities)	£6,960	

» travel from « London – London (embark in Ushuaia)
 » notes « Guide prices per person based on twin cabin and vary throughout the season so do contact us for more information

CROSSING THE CIRCLE

Polar Circle – Antarctic Peninsula

These extended voyages follow the itinerary of 'Classic Antarctica Peninsula' but continue further south to the **Argentine Islands** visiting **Crystal Sound** and **Fish Islands** – one of the most southerly colonies of adie penguins. There is an additional programme for scuba divers at a supplement.

» ships «	» dates «	» cabins «	» guide price «	» opt. extras «
Professor Molchanov	10 - 24 March 2010	Twin cabin (shared facilities)	£5,970	●
Professor Multanovskiy	4 - 18 March 2010 15 - 29 March 2010	Twin cabin (shared facilities)	£5,970	● ●

» travel from « London – London (embark in Ushuaia)
 » notes « Guide prices per person based on twin cabin (shared facilities) for Ushuaia embarkation and vary according to departure date



Unknown Antarctica

December 2009 sees the start of an exciting new itinerary for Professor Molchanov, offering landing sites near **Anvers Island**, the **Bluff Island-area**, **Brabant Island** and south of **Trinity Island**. As this trip is anticipated to fill quickly there is a second 'Unknown Antarctica' voyage on board **Plancius** also in December 2009. The final voyage of the year to this region will also be with **Plancius** crossing the polar circle. This is a unique chance to participate in a true expedition voyage, visiting 'unknown Antarctica'.

» ships «	» dates «	» cabins «	» guide price «	» opt. extras «
Professor Molchanov	1 - 16 Dec 2009	Twin cabin (shared facilities)	£6,650	
Plancius	7 - 22 Dec 2009 15 - 31 March 2010	Twin cabin (private facilities)	£6,995	

» travel from « London – London (embark in Ushuaia)
» notes « Price per person based on twin cabin

Crossing the Antarctic Circle

This 15-day expedition is for people who enjoy active adventures and hanker to travel south of the **Antarctic Circle**. It offers an average of three activities off the ship per day while in the **Antarctic Peninsula**. There is a shipboard education programme.

» ships «	» dates «	» cabins «	» guide price «	» opt. extras «
Akademik Shokalskiy	28 Dec 2009 - 13 Jan 2010	Twin cabin (shared facilities)	£7,235	◆ ▲
Ocean Nova	8 - 24 Jan 2010 8 - 24 Feb 2010	Twin cabin (private facilities)	£8,320	◆ ▲
Akademik Sergey Vavilov	5 - 21 Jan 2010 15 Feb - 3 March 2010	Twin cabin (shared facilities)	£6,795	◆ ▲ ◆ ▲

» travel from « London – London (embark in Ushuaia)
» notes « Price per person based on twin cabin

FROM SOUTH TO NORTH

Atlantic Odyssey

As the ships are used for voyages in both polar regions, each year the vessels are repositioned from the Southern Atlantic Ocean to the Arctic region. This gives the opportunity for this fantastic Atlantic Odyssey which has been called the 'finest pelagic bird-cruise' in the world. Apart from observing many bird-species, you will be able to witness the northern bird migration. This epic voyage starts from **Ushuaia** and heads south to the **Antarctic Peninsula** in search of penguins, albatrosses, petrels and other southern species. Then we turn north to **South Georgia** for king penguins and wandering albatrosses before continuing deeper into the Atlantic to visit the **Tristan da Cunha** archipelago where the

» ships «	» dates «	» embark «	» disembark «	» guide price «
Professor Molchanov	26 Mar - 27 April 2010 26 April - 4 May 2010	Ushuaia Ascension	Ascension Praia (Cape Verdes)	Please enquire
Professor Multanovskiy	5 April - 3 May 2010 30 April - 20 May 2010	Ushuaia Cape Town	Cape Town Praia (Cape Verdes)	Please enquire

» notes « Prices vary according to departure date. Please enquire for guide price

ship may be able to land at **Inaccessible Island** to see the endemic Inaccessible Rail.

There are zodiac cruises close to **Gough Island** for endemic gough moorhen and gough bunting before sailing on north to **St Helena** where Napoleon lived in exile and **Ascension Island** with a colony of over a million sooty terns.

Your spectacular voyage ends in the **Cape Verde Islands** with its spectacular volcanic scenery, so different from the ice of the Southern Ocean. A second itinerary covers a similar route but disembarks either in **Cape Town** or gives passengers the option of continuing to the Cape Verdes.

FROM WEST TO EAST

Epic Antarctica

During this voyage we plan to visit the **Phantom Coast**, the only passenger expedition to do so in 2008. Explorer Richard E. Byrd gave the coast that lies between **Palmer Peninsula** and **Thurston Island** its ghostly title: For two centuries, the ice-locked coastline defied the efforts of explorers to chart it.

In the early 1960s, the US Navy mounted icebreaker operations in the **Bellingshausen** and **Amundsen Seas**. USS Glacier and USS Staten Island, equipped with helicopters, penetrated farther than any previous surface vessels. Using aerial reconnaissance, crews from the icebreakers rewrote the maps, confirming that Thurston Peninsula was actually an island.



More than forty years later, exploring the Phantom Coast is still a challenge for all but the toughest vessels. Our purpose-built, polar class, icebreaker **Kapitan Khlebnikov** can meet the challenge. After a night in **Santiago**, fly to **Stanley** in the Falkland Islands to join the ship for this extraordinary voyage which ends nearly 30 days later in **Lyttelton**, New Zealand.



We are delighted that our special guest during this voyage will be **Alexandra Shackleton**.

» ship « **Kapitan Khlebnikov**
» dates « 3 December 2009 - 4 January 2010
» travel from « London – London (embark in Stanley)
» guide price « **£17,995** per person based on twin cabin (private facilities)